

PRINTS				
REV	SEP	FOR	TO	DATE
4	1	APPL	DLR	05/15

MANUAL SHADE SCHEDULE
(TOP DOWN SHADES)

ITEM	QTY.	TYPE	SHAPE	SIZE		ARCHITECTURAL SHEET	RUD	ARCH. HEAD DET.	CHAIN LOC.	REMARKS
				S.O.W. (v.l.f.)	S.O.H. (v.l.f.)					
1	6	B	RECTANGLE	96"	87 1/2"	A9.02	2"	H/A9.02	RIGHT	RAILROADED
2	2	G	RECTANGLE	55 1/4"	83 1/2"	A9.02	2"	J/A9.02	RIGHT	VERTICAL
3	1	H	RECTANGLE	84"	83 1/2"	A9.02	2"	J/A9.02	RIGHT	RAILROADED
TOTAL	9									

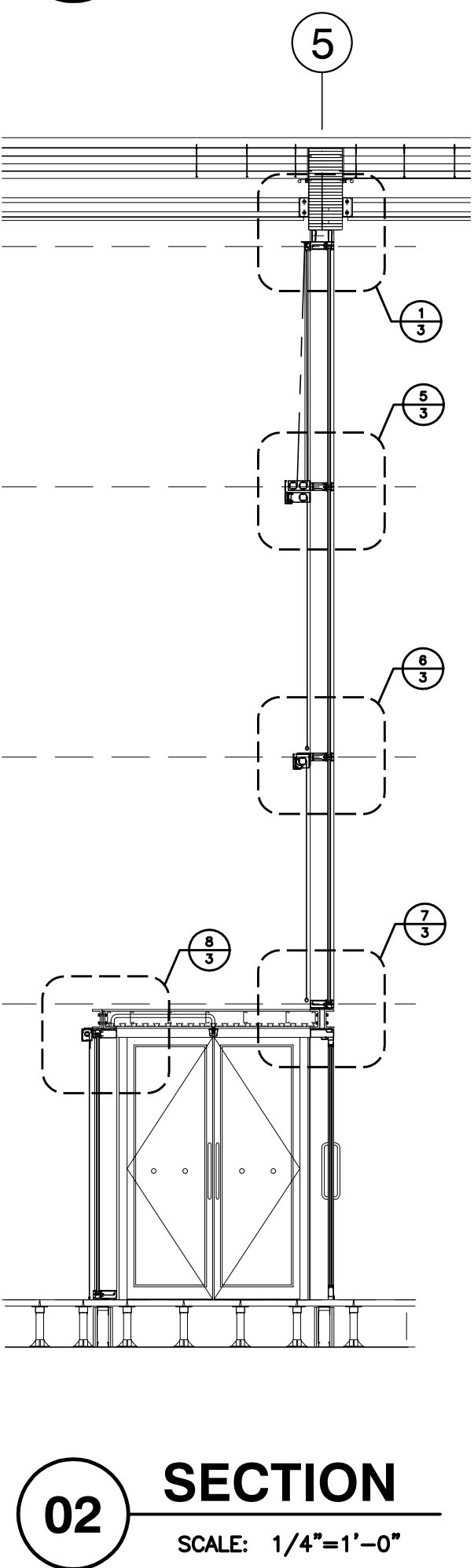
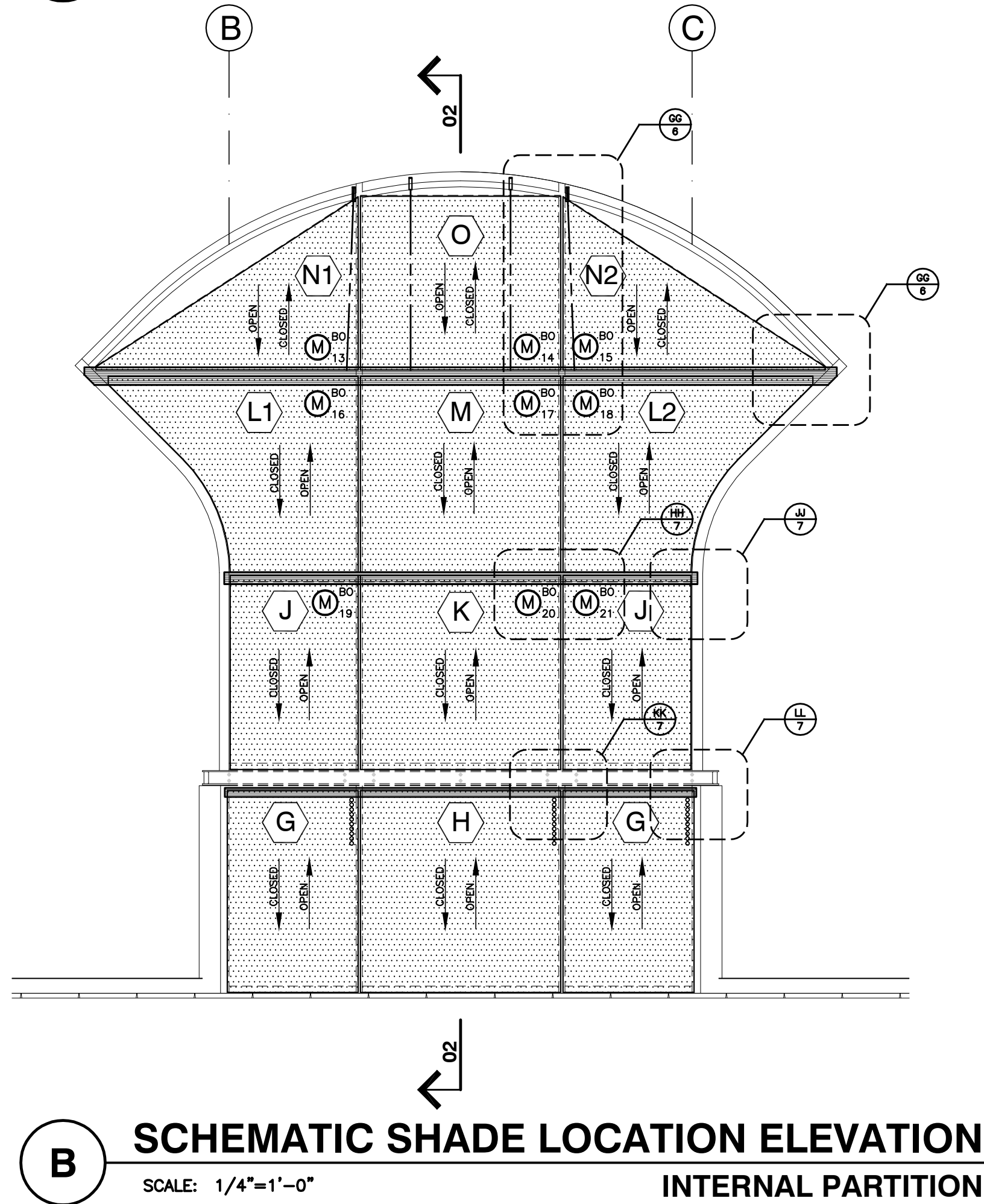
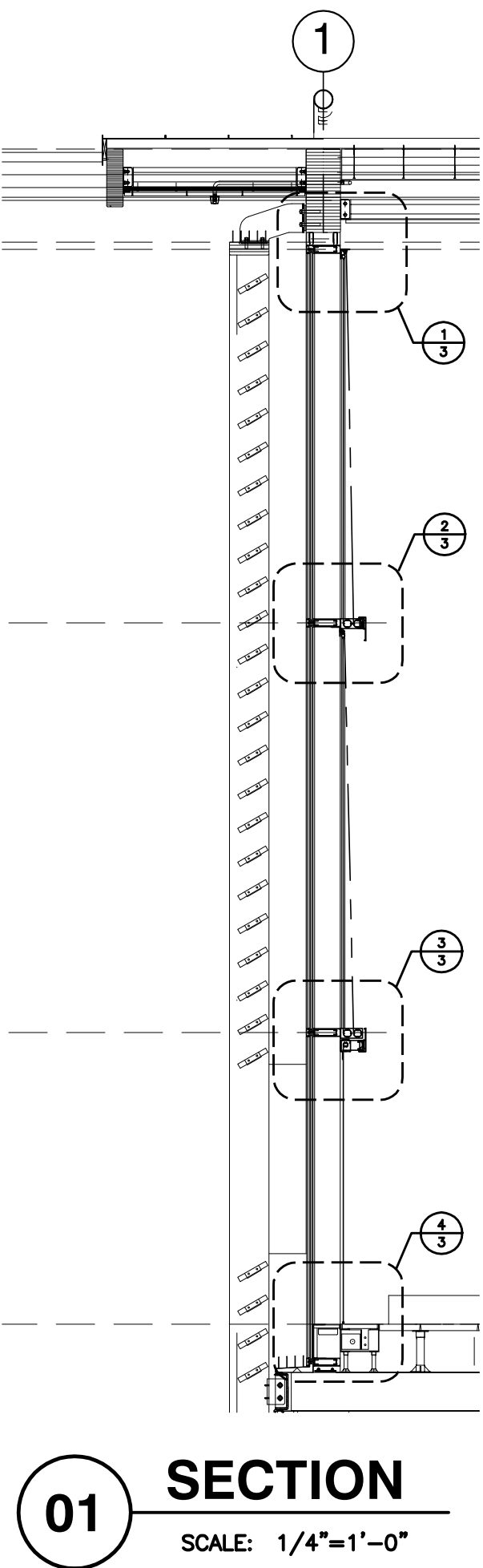
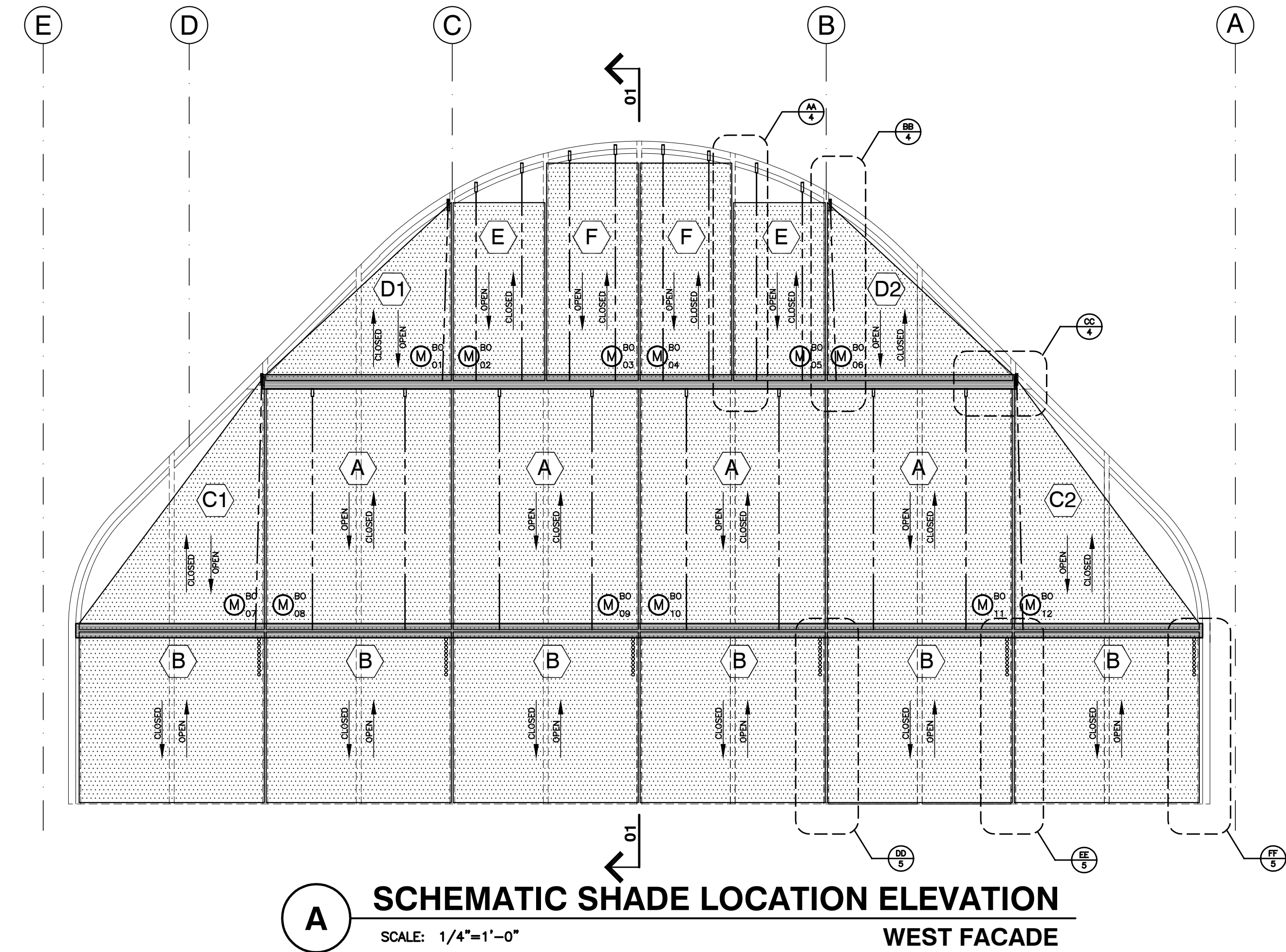
ELECTRO SHADE SCHEDULE
(TOP DOWN SHADES)

ITEM	QTY.	TYPE	SHAPE	SIZE		ARCHITECTURAL SHEET	RUD	ARCH. HEAD DET.	MOTOR LOC.	REMARKS
				S.O.W. (v.l.f.)	S.O.H. (v.l.f.)					
4	1	J	RECTANGLE	56"	80"	A9.02	2 13/16"	J/A9.02	LEFT	VERTICAL
	1		RECTANGLE	56"	80"	A9.02	2 13/16"	J/A9.02	RIGHT	VERTICAL
5	1	K	RECTANGLE	84"	80"	A9.02	2 13/16"	J/A9.02	RIGHT	RAILROADED
6	1	L1/L2	IRREGULAR	110"	81"	A9.02	2 13/16"	H/A9.02	LEFT	RAILROADED
	1		IRREGULAR	110"	81"	A9.02	2 13/16"	H/A9.02	RIGHT	RAILROADED
7	1	M	RECTANGLE	84"	81"	A9.02	2 13/16"	H/A9.03	RIGHT	RAILROADED
TOTAL	6									

ELECTRO SHADE SCHEDULE
(BOTTOM UP SHADES)

ITEM	QTY.	TYPE	SHAPE	SIZE		ARCHITECTURAL SHEET	RUD	ARCH. HEAD DET.	MOTOR LOC.	REMARKS
				S.O.W. (v.l.f.)	S.O.H. (v.l.f.)					
8	1	A	RECTANGLE	96"	123 1/2"	A9.02	3"	H/A9.02	RIGHT	RAILROADED
	1		RECTANGLE	96"	123 1/2"	A9.02	3"	H/A9.02	LEFT	RAILROADED
	1		RECTANGLE	96"	123 1/2"	A9.02	3"	H/A9.02	RIGHT	RAILROADED
	1		RECTANGLE	96"	123 1/2"	A9.02	3"	H/A9.02	LEFT	RAILROADED
9	1	C1/C2	TRIANGLE	96"	123 1/2"	A9.02	3"	H/A9.02	LEFT	RAILROADED
	1		TRIANGLE	96"	123 1/2"	A9.03	3"	H/A9.03	RIGHT	RAILROADED
10	1	D1/D2	TRIANGLE	96"	91 1/2"	A9.02	2 7/8"	G/A9.02	LEFT	RAILROADED
	1		TRIANGLE	96"	91 1/2"	A9.02	2 7/8"	G/A9.02	RIGHT	RAILROADED
11	1	E	RECTANGLE	48"	91 1/2"	A9.02	2 7/8"	G/A9.02	LEFT	RAILROADED
	1		RECTANGLE	48"	91 1/2"	A9.02	2 7/8"	G/A9.02	RIGHT	RAILROADED
12	1	F	RECTANGLE	48"	111 3/4"	A9.02	2 15/16"	G/A9.02	LEFT	RAILROADED
	1		RECTANGLE	48"	111 3/4"	A9.02	2 15/16"	G/A9.02	RIGHT	RAILROADED
13	1	N1/N2	TRIANGLE	113 5/8"	73"	A9.02	2 13/16"	H/A9.02	LEFT	RAILROADED
	1		TRIANGLE	113 5/8"	73"	A9.02	2 13/16"	H/A9.02	RIGHT	RAILROADED
14	1	O	RECTANGLE	84"	73"	A9.02	2 13/16"	H/A9.02	RIGHT	RAILROADED
TOTAL	15									

KEY	
C.S.	— CENTER SUPPORT
D.E.	— DRIVE END
I.E.	— IDLE END
O.H.	— OPENING HEIGHT
O.O.W.	— OVERALL OPENING WIDTH
O.W.	— OPENING WIDTH
R.U.D.	— ROLL UP DIAMETER
S.C.	— SHADECLOTH
S.O.H.	— SHADE OPENING HEIGHT
S.O.W.	— SHADE OPENING WIDTH
V.I.F.	— VERIFY IN FIELD
N.I.C.	— NOT IN CONTRACT
	— DETAIL NUMBER
	— SHEET NUMBER
	— SHADECLOTH
	— FLOOR NUMBER (OPTIONAL)
	— MOTOR NUMBER
	— DIRECTION OF SHADE TRAVEL
	— CHAIN LOCATION
	— WALL MOUNT ANGLE
	— DRIVE CABLE
	— FASCIA



NOTES:
1 - ALL DIMENSIONS AND JOB CONDITIONS TO BE FIELD VERIFIED BY DEALER BEFORE FABRICATION.
2 - ALL MATERIALS, COLORS, FINISHES, ETC. ARE TO BE MechoShade STANDARDS UNLESS OTHERWISE NOTED.
3 - MechoShade Systems, Inc. RESERVES THE RIGHT TO MAKE DESIGN MODIFICATIONS AND TECHNICAL CHANGES WITHOUT PRIOR NOTICE.
4 - BLACKOUT SHADECLOTH TO BE No. 0700 SERIES - 72" WIDTH - RAILROADED WIDTH FOR HEIGHT WITH SEAM/BATTEN AS SHOWN ON ABOVE ELEVATION - STANDARD MechoShade COLOR AS APPROVED BY ARCHITECT.

SHOP DRAWING DIMENSIONS
DETAILS:
HARDWARE SIZES ± 1/32" (0.79mm)
ROLL DIAMETER SIZES ± 1/8" (3.18mm)
EDGE CLEARANCE ± 3/16" (4.76mm)
SHADE BANDS:
RollerShade width and height dimensions (W x HT) are approximate, subject to final field dimensions to be scheduled by the Dealer/Contractor and provided to MechoShade Systems for fabrication in accordance with Contract Documents. Shop drawings are for typical details and shade locations only. Final sizes are not included. All blocking and supports are shown for reference only. Blocking design is not included in this Shop Drawing. Blocking is Not In Contract.
FILE NAME: M:\M-2825EMB Yale School of Forestry\SHOP DRAWINGS\LOCATION PLAN.dwg

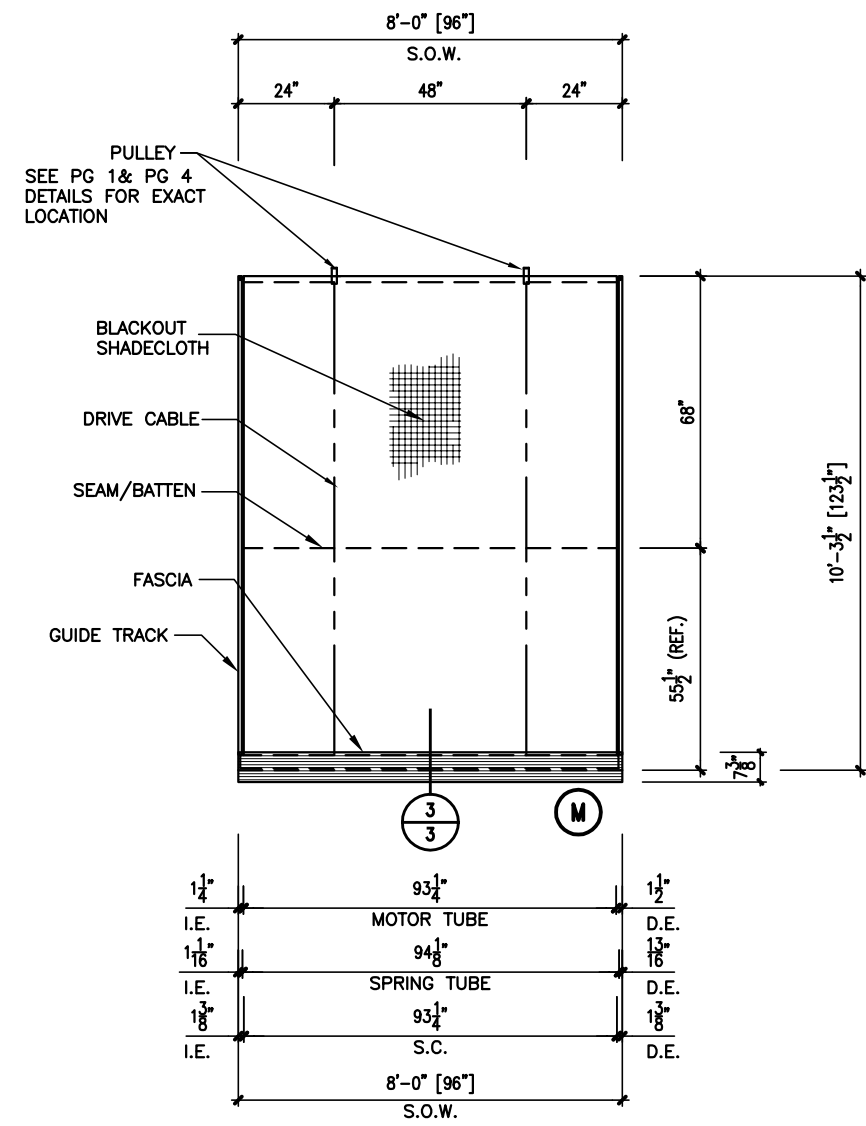
4			
3			
2			
1			
NO.	DATE	DESCRIPTION	BY
REVISIONS			

MechoShade Systems, Inc.
42-03 35th Street
Long Island City, NY 11101
Tel: 718-729-2020
Fax: 718-729-2941

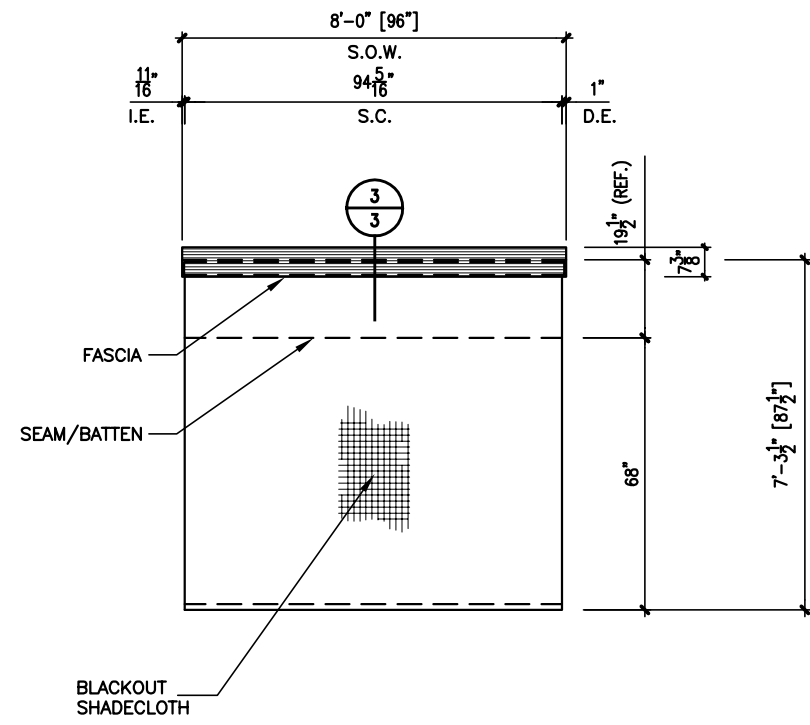
Copyright © 2007 MechoShade Systems Inc.

JOB	YALE SCHOOL OF FORESTRY NEW HAVEN, CT	DWG NO.	M-2825EMB	REV.	1
TITLE	PROPOSED DETAILS "ELECTRO" SHADES	JOB NO.	384145	SCALE	AS NOTED
ARCHITECT	CENTERBROOK ARCHITECTS AND PLANNERS, LLC	DATE	05/15/08	SCALE	AS NOTED
DEALER	DRAPERIES INC.	OWN. BY	B.F.	CKD. BY	Z.D.
SHEET NO.		1 OF 8			

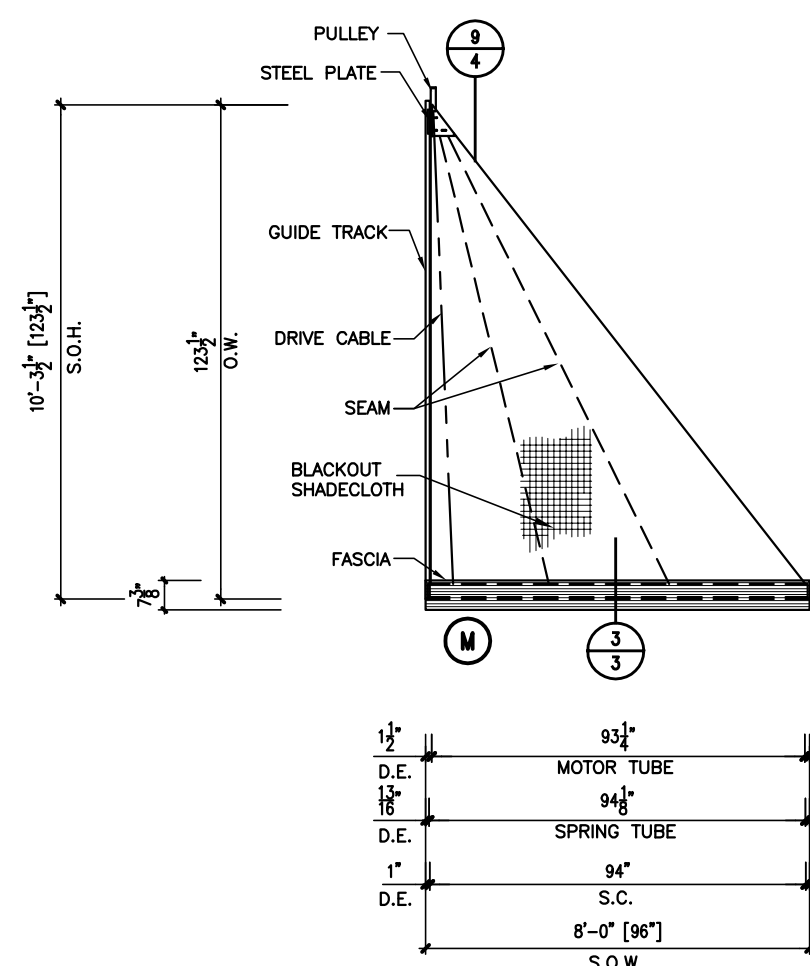
PRINTS				
REV	SEP	FOR	TO	DATE
4	1	APPL	DLR	05/15



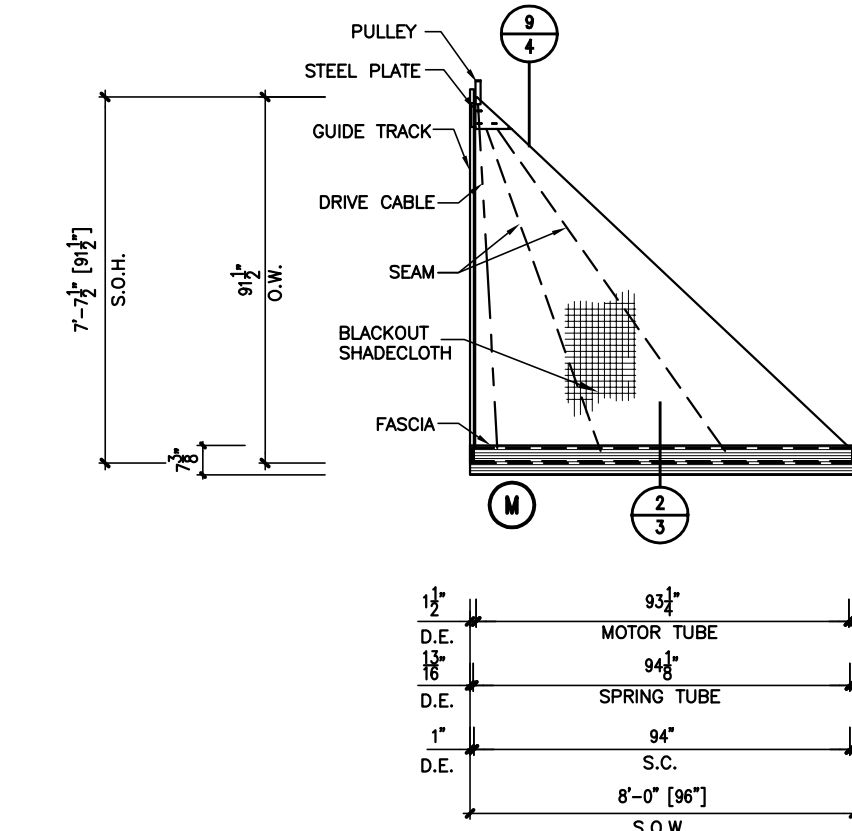
A **INTERIOR ELEVATION**
SCALE: 1/4"=1'-0"



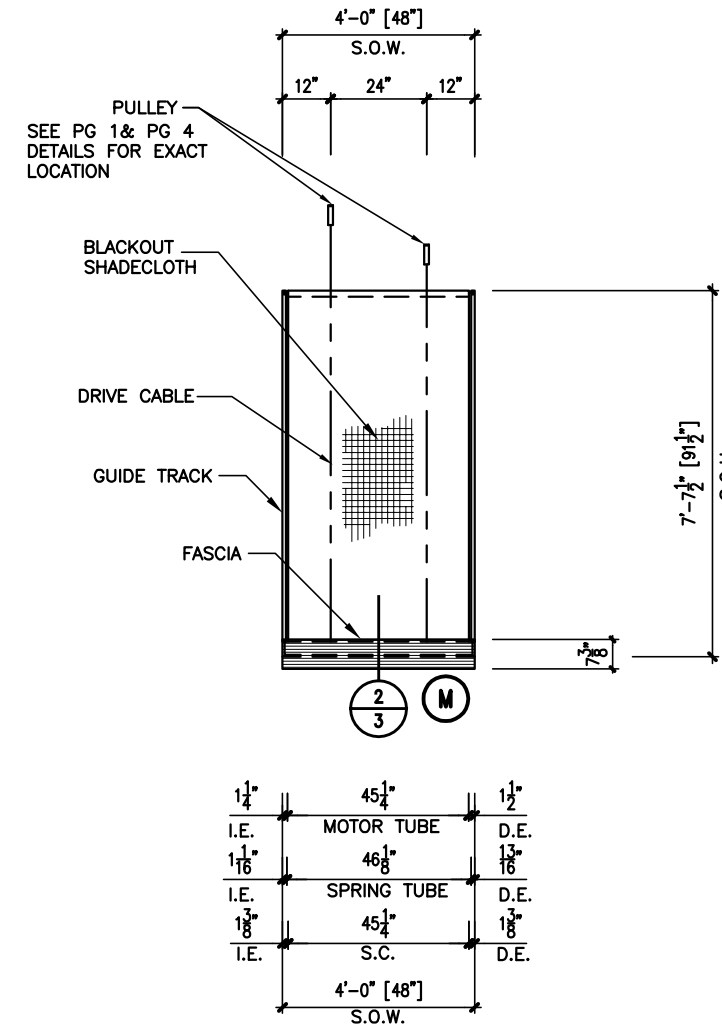
B **INTERIOR ELEVATION**
SCALE: 1/4"=1'-0"



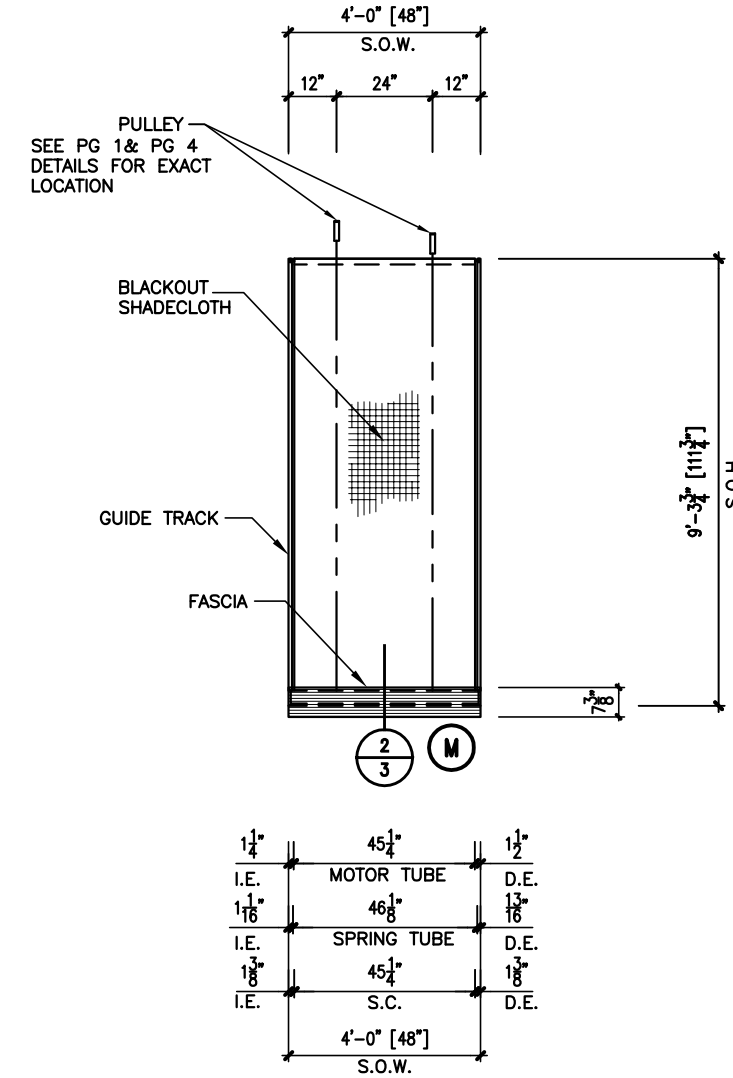
C1/C2 **INTERIOR ELEVATION**
SCALE: 1/4"=1'-0"



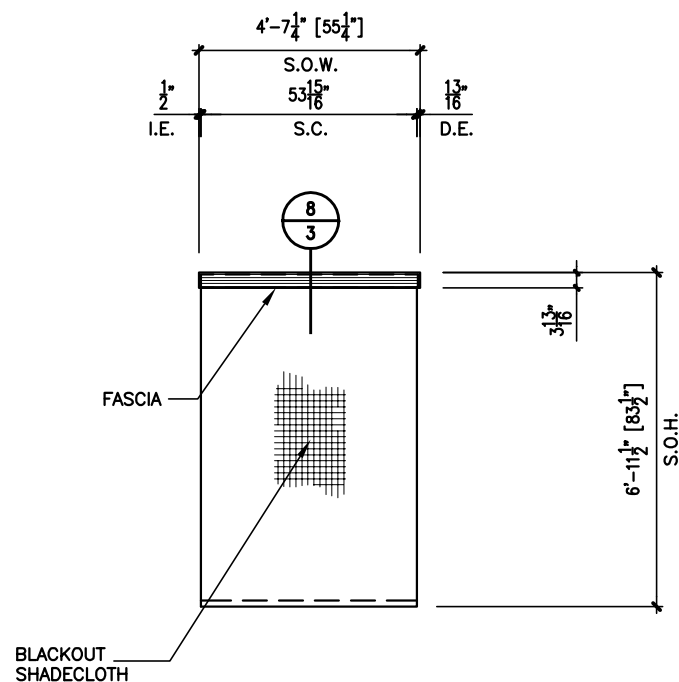
D1/D2 **INTERIOR ELEVATION**
SCALE: 1/4"=1'-0"



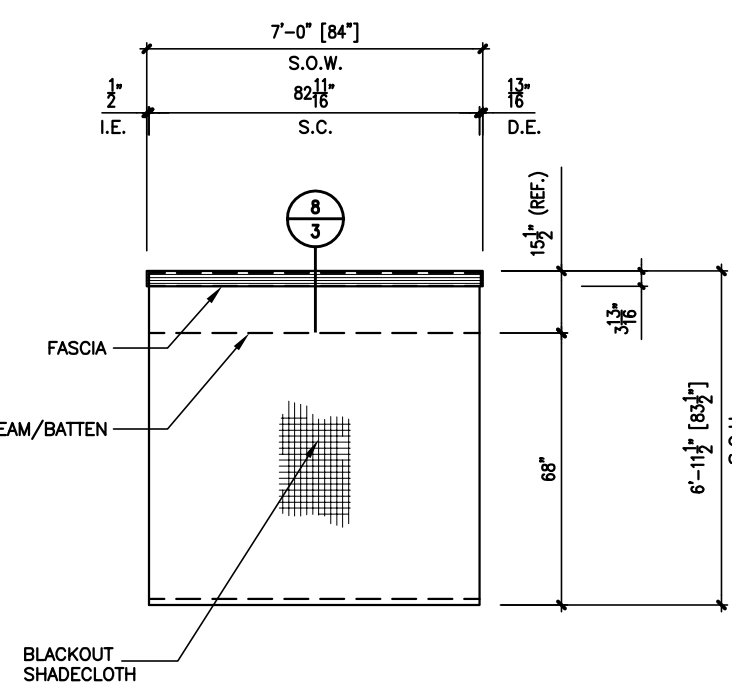
E **INTERIOR ELEVATION**
SCALE: 1/4"=1'-0"



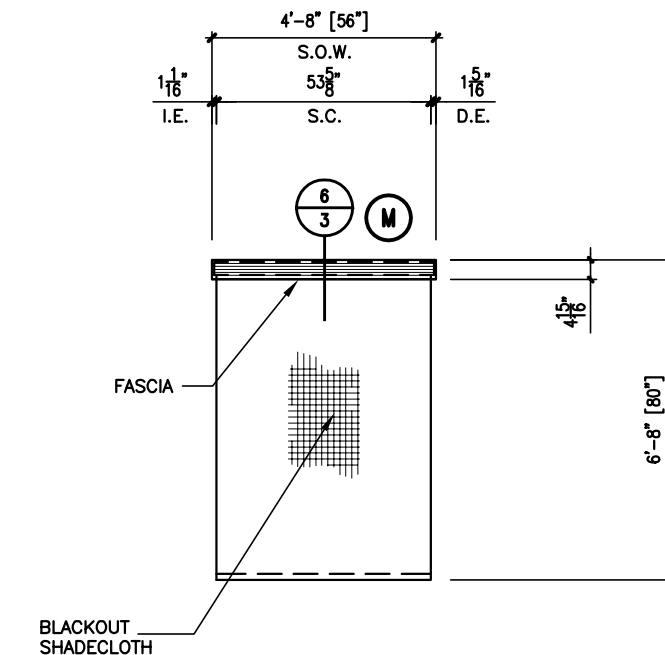
F **INTERIOR ELEVATION**
SCALE: 1/4"=1'-0"



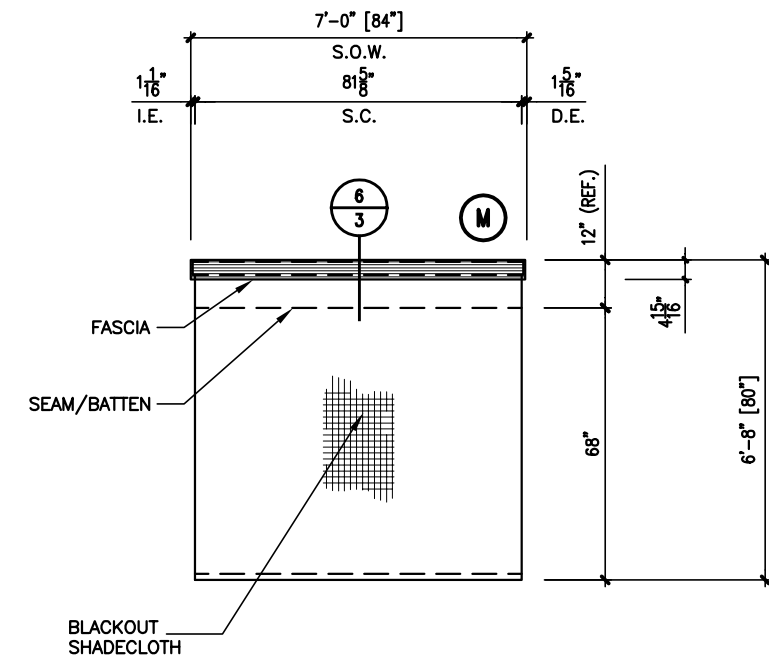
G **INTERIOR ELEVATION**
SCALE: 1/4"=1'-0"



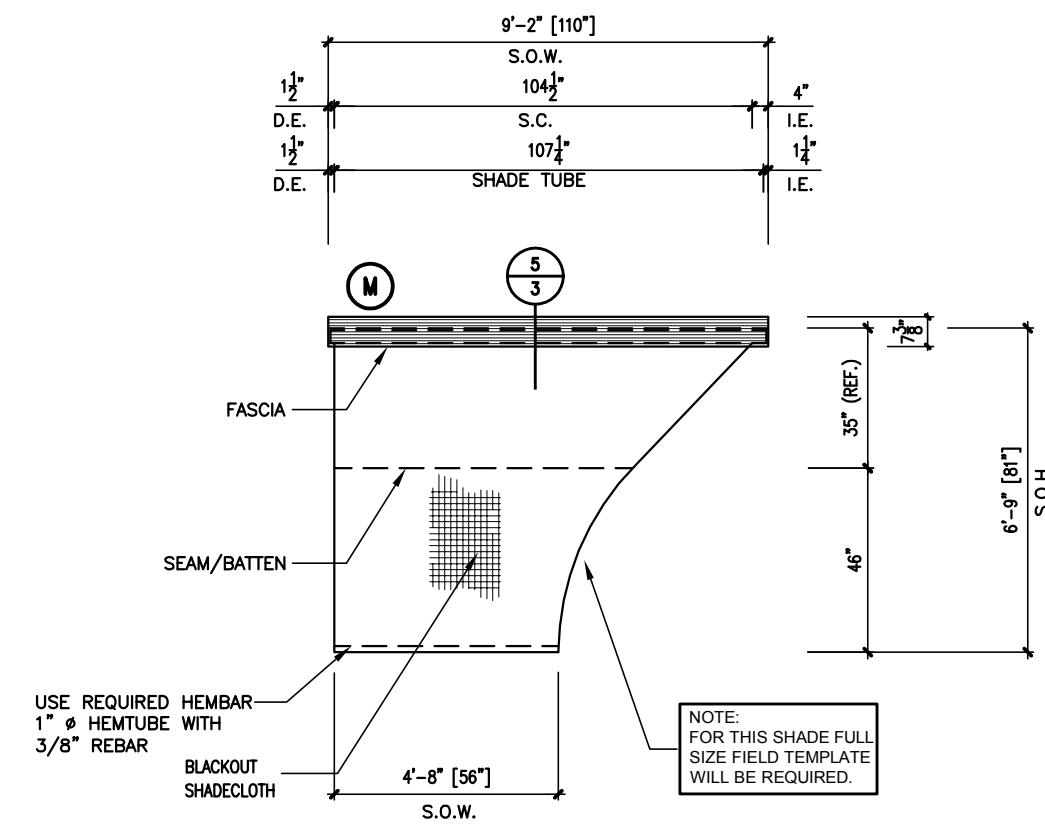
H **INTERIOR ELEVATION**
SCALE: 1/4"=1'-0"



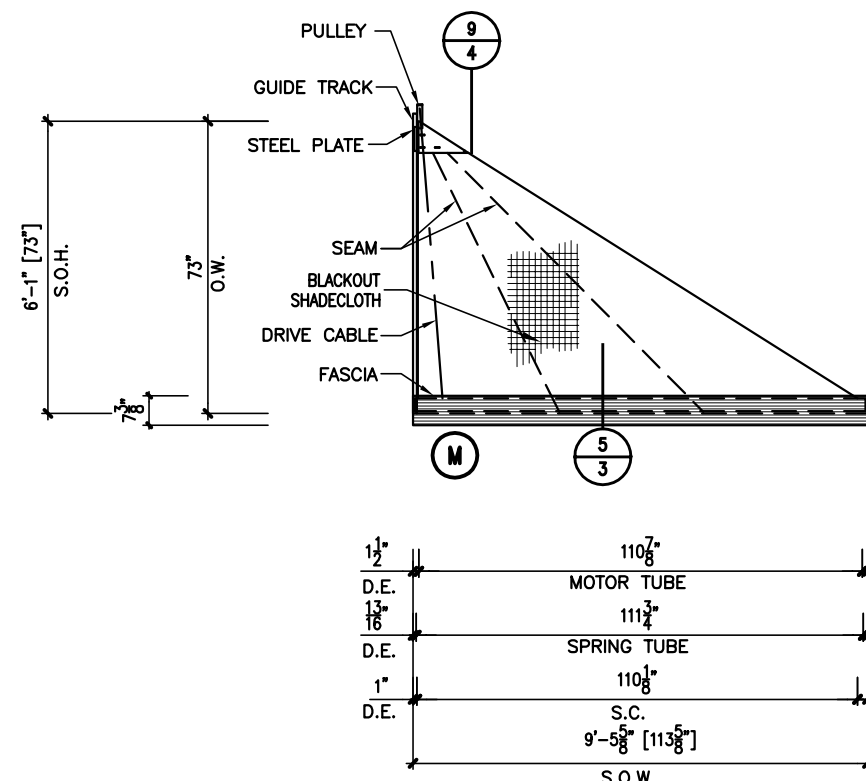
J **INTERIOR ELEVATION**
SCALE: 1/4"=1'-0"



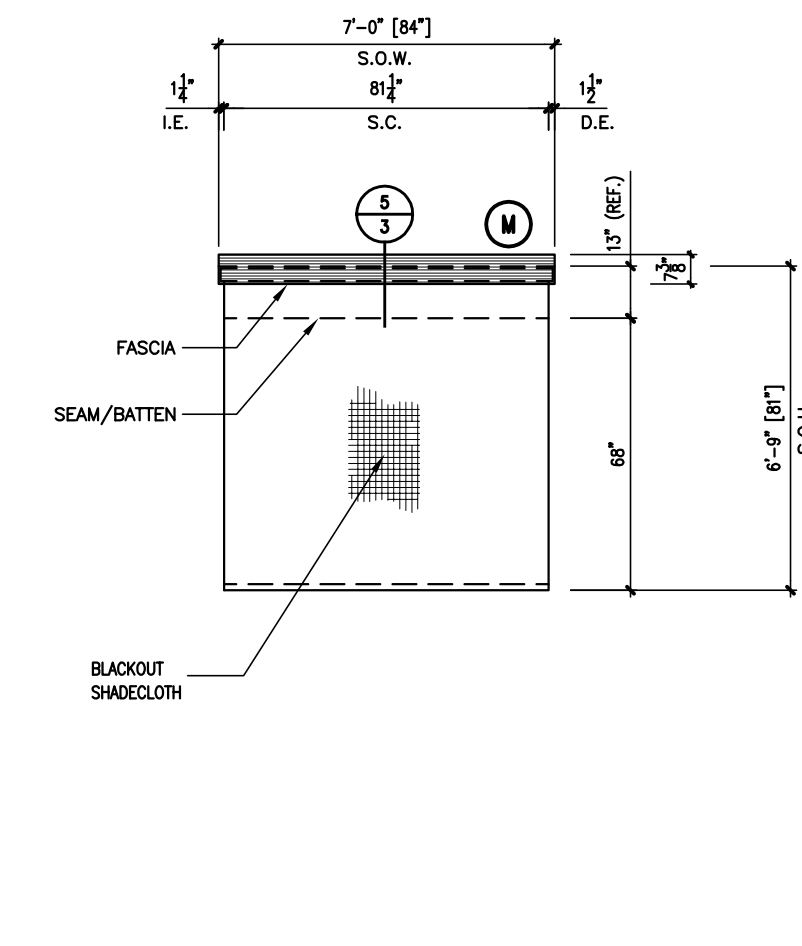
K **INTERIOR ELEVATION**
SCALE: 1/4"=1'-0"



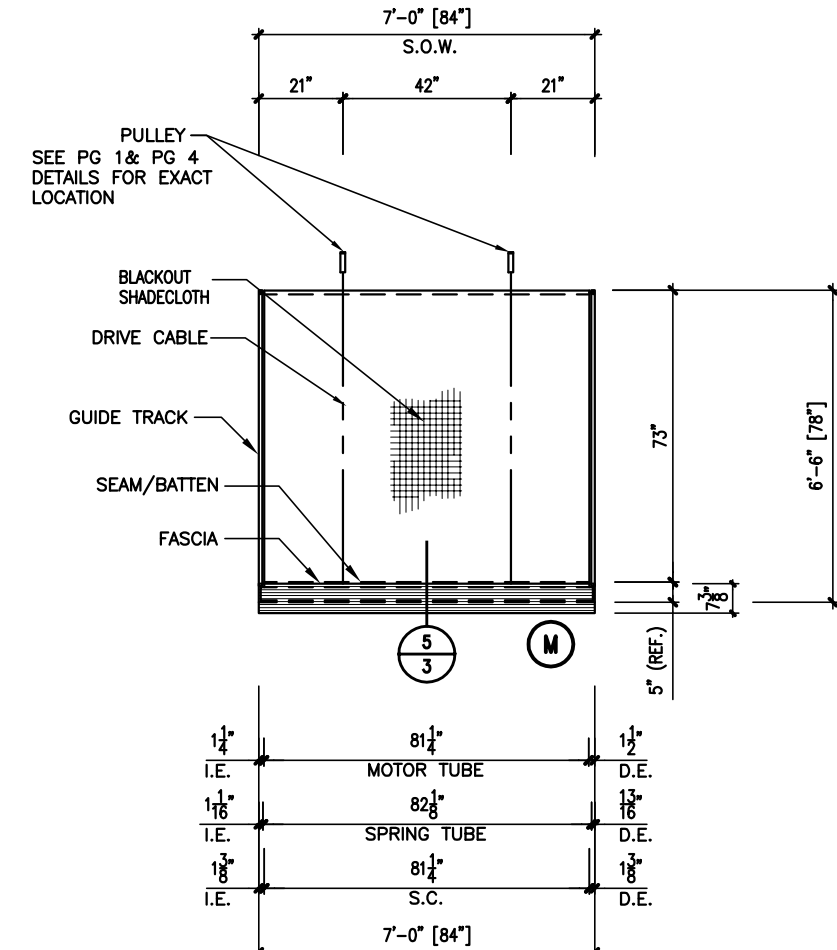
L1/L2 **INTERIOR ELEVATION**
SCALE: 1/4"=1'-0"



N1/N2 **INTERIOR ELEVATION**
SCALE: 1/4"=1'-0"



M **INTERIOR ELEVATION**
SCALE: 1/4"=1'-0"



O **INTERIOR ELEVATION**
SCALE: 1/4"=1'-0"

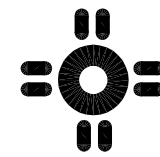
KEY	
C.S.	- CENTER SUPPORT
D.E.	- DRIVE END
I.E.	- IDLE END
O.H.	- OPENING HEIGHT
O.O.W.	- OVERALL OPENING WIDTH
O.W.	- OPENING WIDTH
R.U.D.	- ROLL UP DIAMETER
S.C.	- SHADECLOTH
S.O.H.	- SHADE OPENING HEIGHT
S.O.W.	- SHADE OPENING WIDTH
V.I.F.	- VERIFY IN FIELD
N.I.C.	- NOT IN CONTRACT

NOTES:
SEE SHEET #1

SHOP DRAWING DIMENSIONS
DETAILS: HARDWARE SIZES ± 1/32" (0.79mm)
ROLL DIAMETER SIZES ± 1/8" (3.18mm)
EDGE CLEARANCE ± 3/16" (4.76mm)
SHADE BANDS: RollerShade width and height dimensions (W x HT) are approximate, subject to final field dimensions to be scheduled by the Dealer/Contractor and provided to MechoShade Systems for fabrication in accordance with Contract Documents. Shop drawings are for typical details and shade locations only. Final sizes are not included. All blocking and supports are shown for reference only. Blocking design is not included in this Shop Drawing. Blocking is Not In Contract.

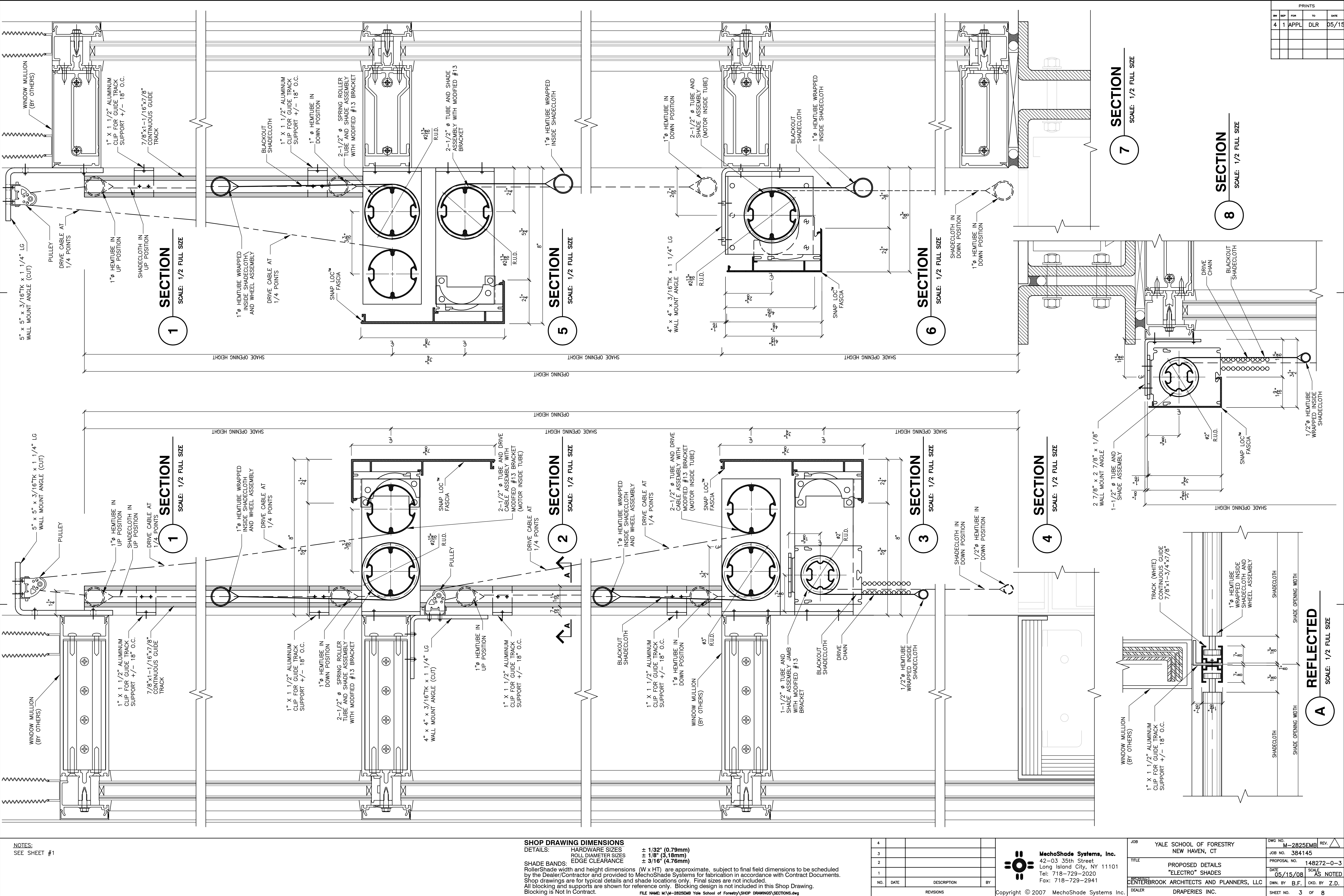
FILE NAME: M:\M-2825EMB Yale School of Forestry\SHOP DRAWINGS\Elevations.dwg

NO.	DATE	DESCRIPTION	BY
4			
3			
2			
1			
REVISIONS			



MechoShade Systems, Inc.
42-03 35th Street
Long Island City, NY 11101
Tel: 718-729-2020
Fax: 718-729-2941

JOB	YALE SCHOOL OF FORESTRY NEW HAVEN, CT	DWG NO.	M-2825EMB	REV.	△
TITLE	PROPOSED DETAILS "ELECTRO" SHADES	JOB NO.	384145	PROPOSAL NO.	148272-0-3
DATE	05/15/08	SCALE	AS NOTED	DWN. BY	B.F.
DEALER	DRAPERIES INC.	SHEET NO.	2	OF	8



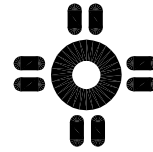
NOTES:
SEE SHEET #1

SHOP DRAWING DIMENSIONS
DETAILS: HARDWARE SIZES
ROLL DIAMETER SIZES
EDGE CLEARANCE

SHADE BANDS:
RollerShade with and height dimensions (W x HT) are approximate, subject to final field dimensions to be scheduled by the Dealer/Contractor and provided to MechoShade Systems for fabrication in accordance with Contract Documents. Shop drawings are for typical details and shade locations only. Final sizes are not included. All blocking and supports are shown for reference only. Blocking design is not included in this Shop Drawing. Blocking is Not In Contract.

FILE NAME: M:\M-2825EMB Yale School of Forestry\SHOP DRAWINGS\SECTIONS.dwg

NO.	DATE	DESCRIPTION	BY
4			
3			
2			
1			



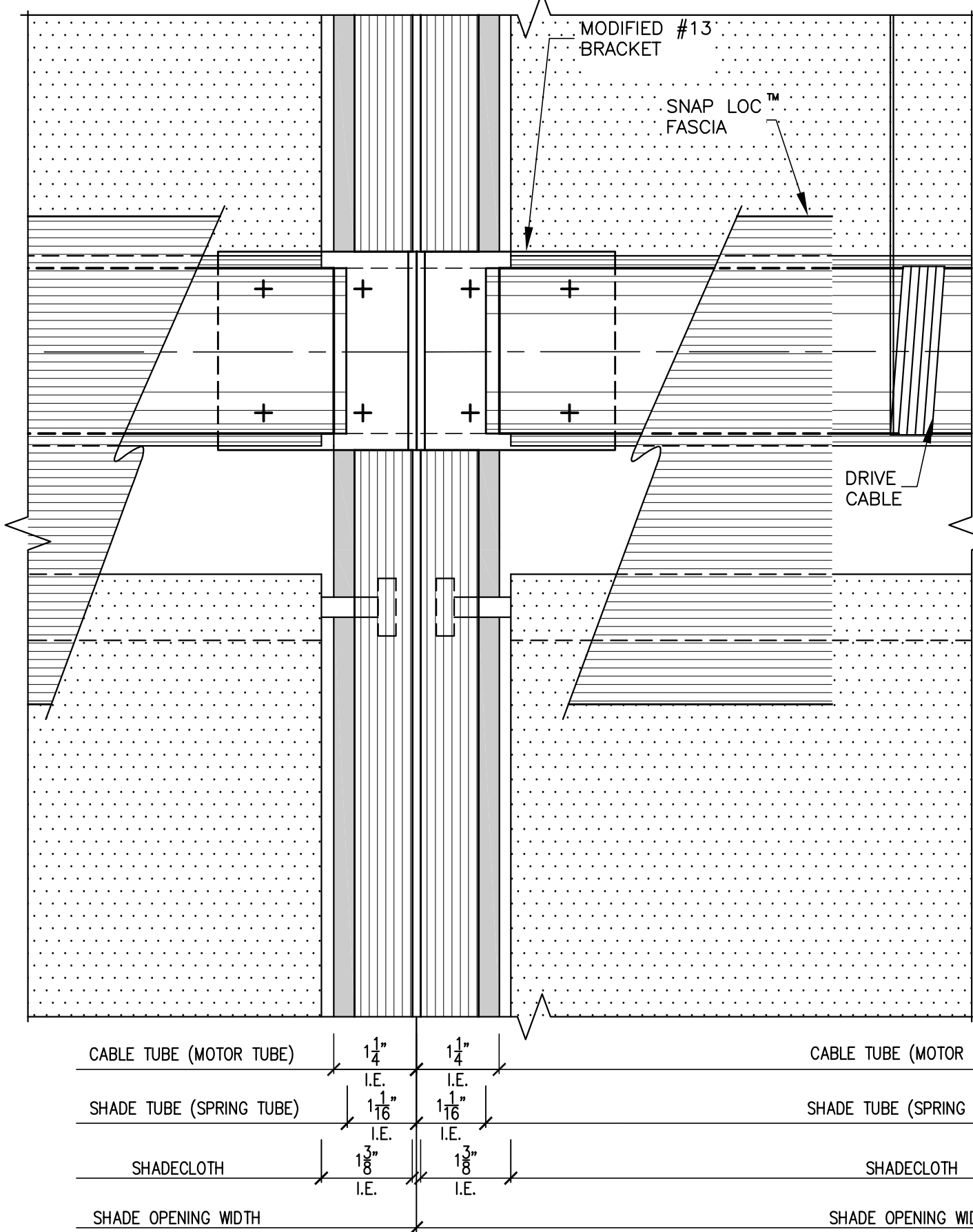
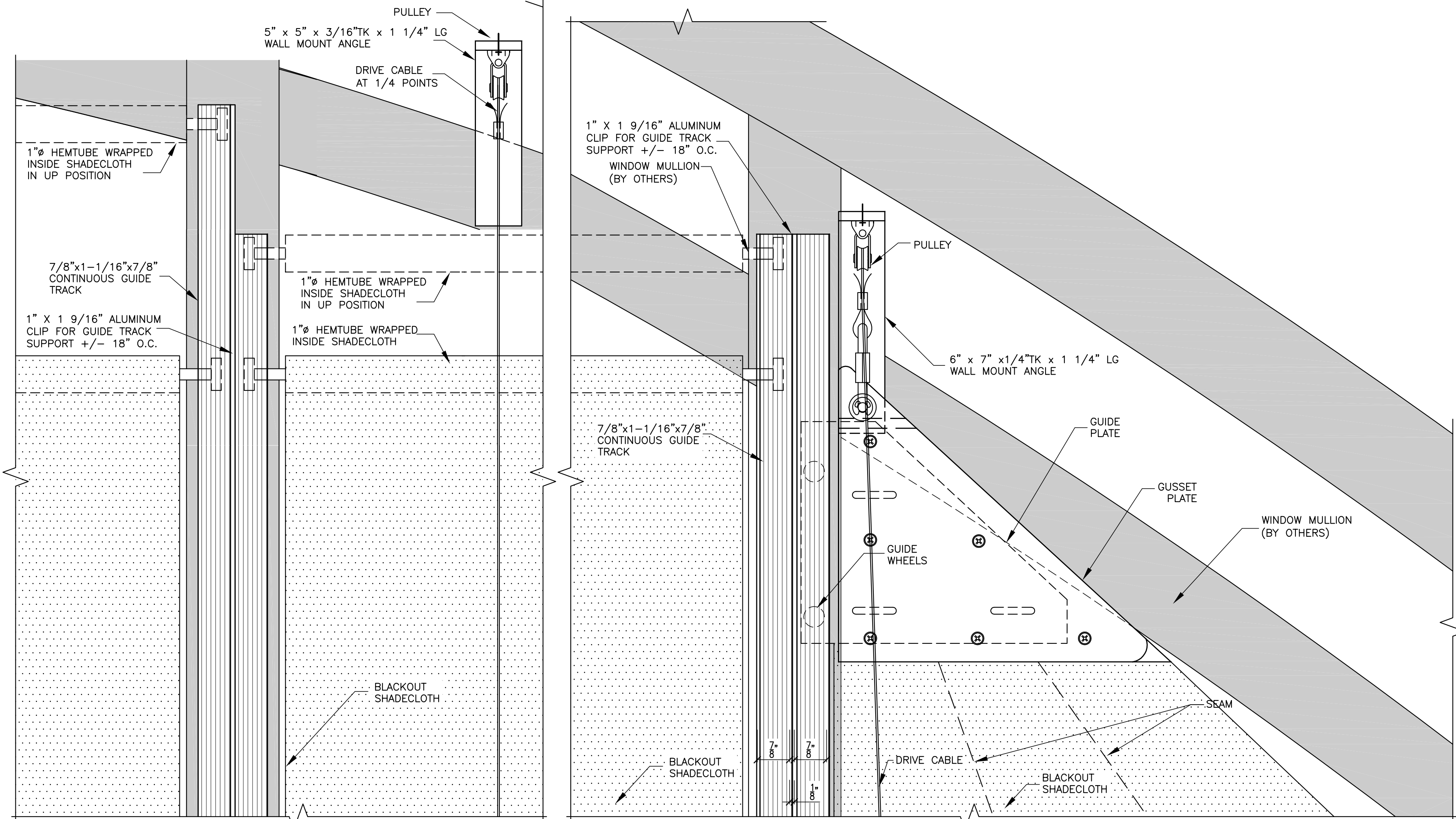
MechoShade Systems, Inc.
42-03 35th Street
Long Island City, NY 11101
Tel: 718-729-2020
Fax: 718-729-2941

JOB	YALE SCHOOL OF FORESTRY NEW HAVEN, CT
TITLE	PROPOSED DETAILS "ELECTRO" SHADES
DATE	05/15/08
DEALER	DRAPERIES INC.

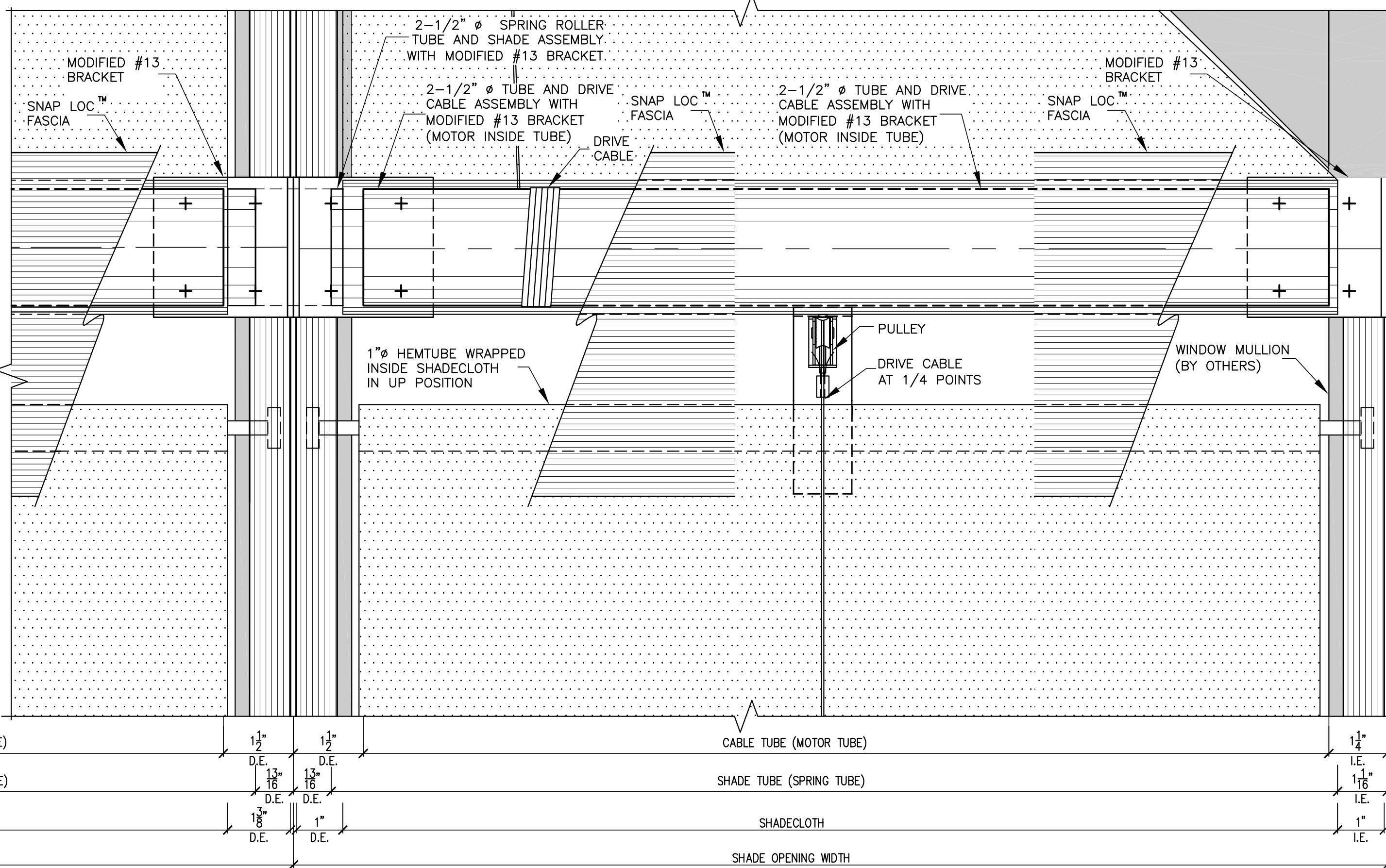
DWG NO.	M-2825EMB	REV.	
JOB NO.	384145		
PROPOSAL NO.	148272-0-3		
DATE	05/15/08	SCALE	AS NOTED
DWN. BY	B.F.	CKD. BY	Z.D.
SHEET NO.	3	OF	8

PRINTS				
NO.	SEP	FOR	TO	DATE
4	1	APPL	DLR	05/15

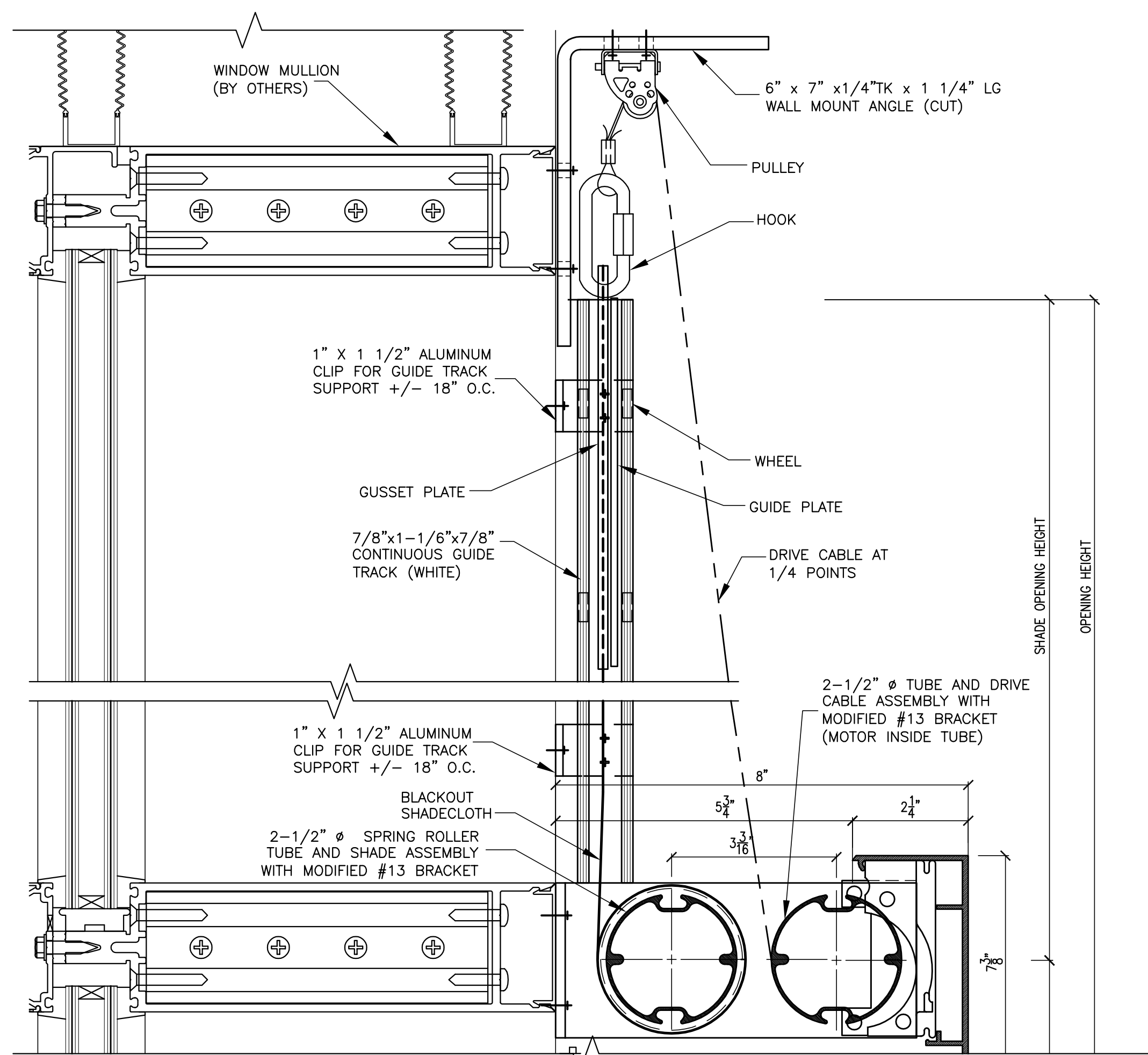
PRINTS				
REV	SEP	FOR	TO	DATE
4	1	APPL	DLR	05/15



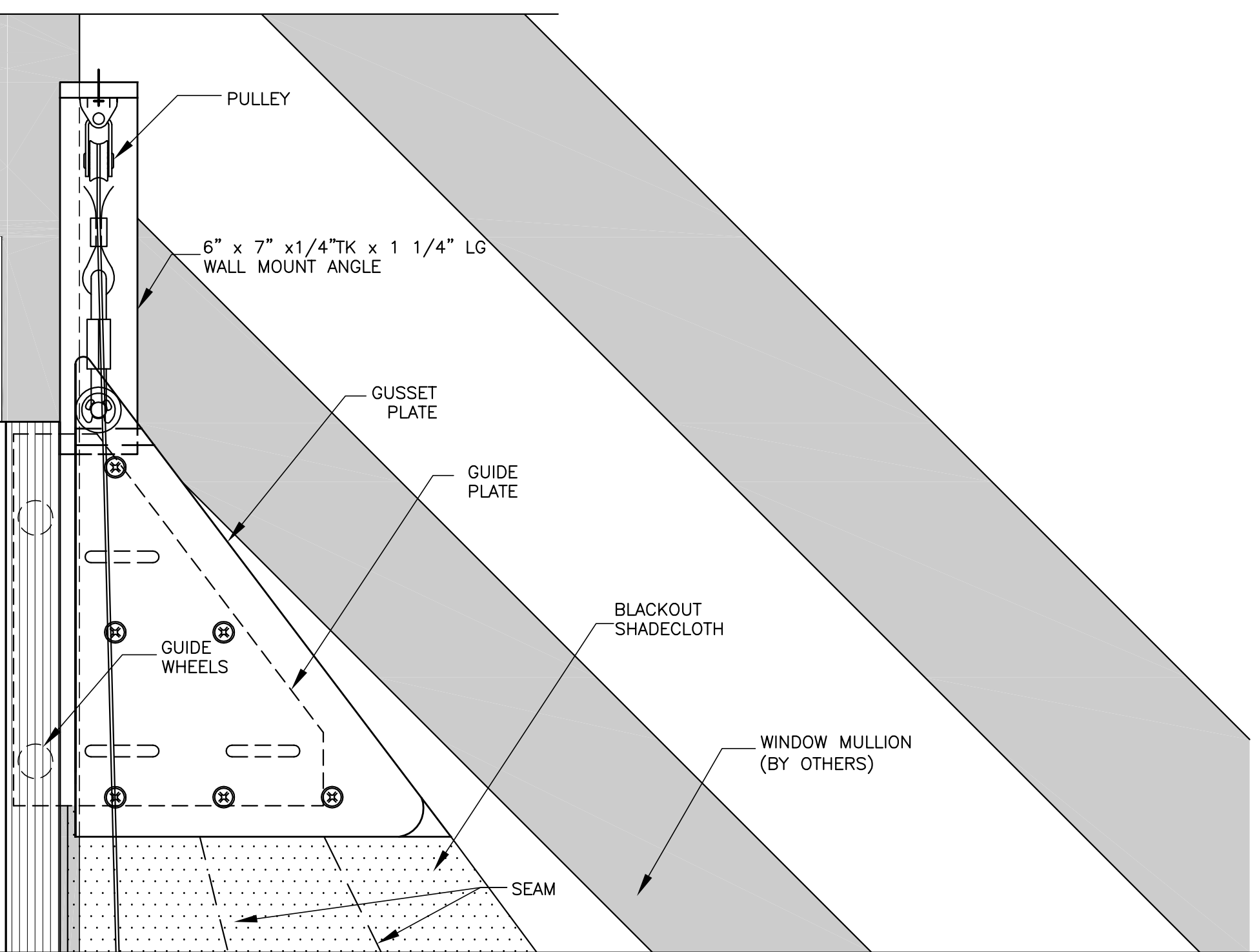
AA ELEVATION VIEW
SCALE: 1/2 FULL SIZE



BB ELEVATION VIEW
SCALE: 1/2 FULL SIZE



9 SECTION
SCALE: 1/2 FULL SIZE

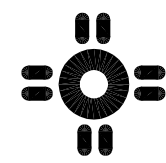


CC ELEVATION VIEW
SCALE: 1/2 FULL SIZE

NOTES:
SEE SHEET #1

SHOP DRAWING DIMENSIONS
DETAILS: HARDWARE SIZES ± 1/32" (0.79mm)
ROLL DIAMETER SIZES ± 1/8" (3.18mm)
EDGE CLEARANCE ± 3/16" (4.76mm)
SHADE BANDS: RollerShade width and height dimensions (W x HT) are approximate, subject to final field dimensions to be scheduled by the Dealer/Contractor and provided to MechoShade Systems for fabrication in accordance with Contract Documents. Shop drawings are for typical details and shade locations only. Final sizes are not included. All blocking and supports are shown for reference only. Blocking design is not included in this Shop Drawing. Blocking is Not In Contract.
FILE NAME: M:\M-2825EMB Yale School of Forestry\SHOP DRAWINGS\DETAILS.dwg

NO.	DATE	DESCRIPTION	BY
4			
3			
2			
1			
REVISIONS			

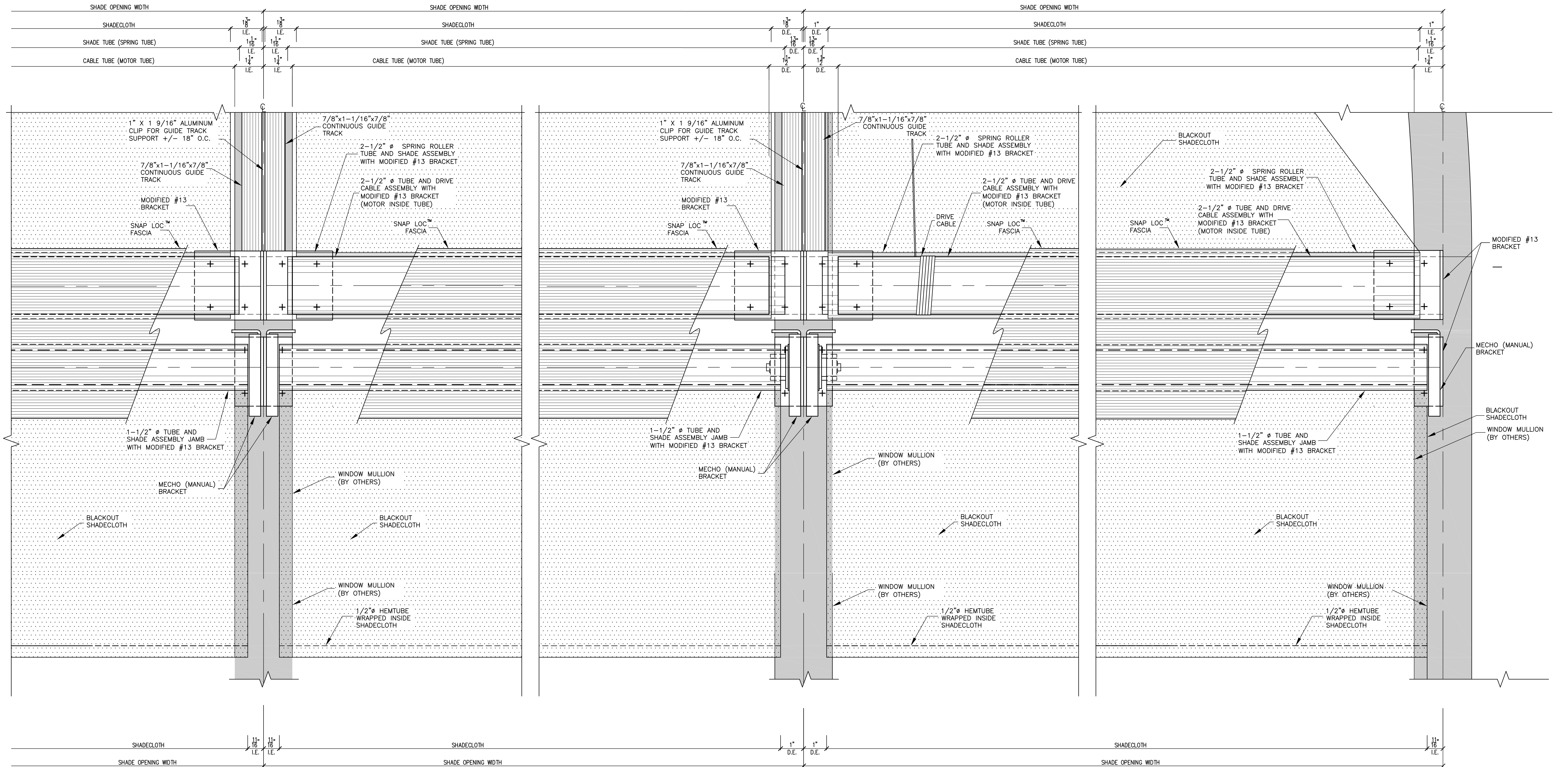


MechoShade Systems, Inc.
42-03 35th Street
Long Island City, NY 11101
Tel: 718-729-2020
Fax: 718-729-2941

Copyright © 2007 MechoShade Systems Inc.

JOB	YALE SCHOOL OF FORESTRY NEW HAVEN, CT	DWG NO.	M-2825EMB	REV.	△
		JOB NO.	384145		
TITLE	PROPOSED DETAILS "ELECTRO" SHADES	PROPOSAL NO.	148272-0-3		
DATE	05/15/08	SCALE	AS NOTED		
ARCHITECT	CENTERBROOK ARCHITECTS AND PLANNERS, LLC	DWN. BY	B.F.	CKD. BY	Z.D.
DEALER	DRAPERIES INC.	SHEET NO.	4	OF	8

PRINTS				
REV	SEP	FOR	TO	DATE
4	1	APPL	DLR	05/15



DD ELEVATION VIEW
SCALE: 1/2 FULL SIZE

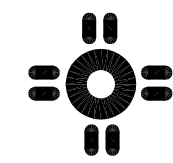
EE ELEVATION VIEW
SCALE: 1/2 FULL SIZE

FF ELEVATION VIEW
SCALE: 1/2 FULL SIZE

NOTES:
SEE SHEET #1

SHOP DRAWING DIMENSIONS
DETAILS: HARDWARE SIZES ± 1/32" (0.79mm)
ROLL DIAMETER SIZES ± 1/8" (3.18mm)
EDGE CLEARANCE ± 3/16" (4.76mm)
SHADE BANDS: RollerShade width and height dimensions (W x HT) are approximate, subject to final field dimensions to be scheduled by the Dealer/Contractor and provided to MechoShade Systems for fabrication in accordance with Contract Documents. Shop drawings are for typical details and shade locations only. Final sizes are not included. All blocking and supports are shown for reference only. Blocking design is not included in this Shop Drawing. Blocking is Not In Contract.
FILE NAME: M:\M-2825EMB Yale School of Forestry\SHOP DRAWINGS\DETAILS.dwg

4				
3				
2				
1				
NO.	DATE	DESCRIPTION	BY	
REVISIONS				

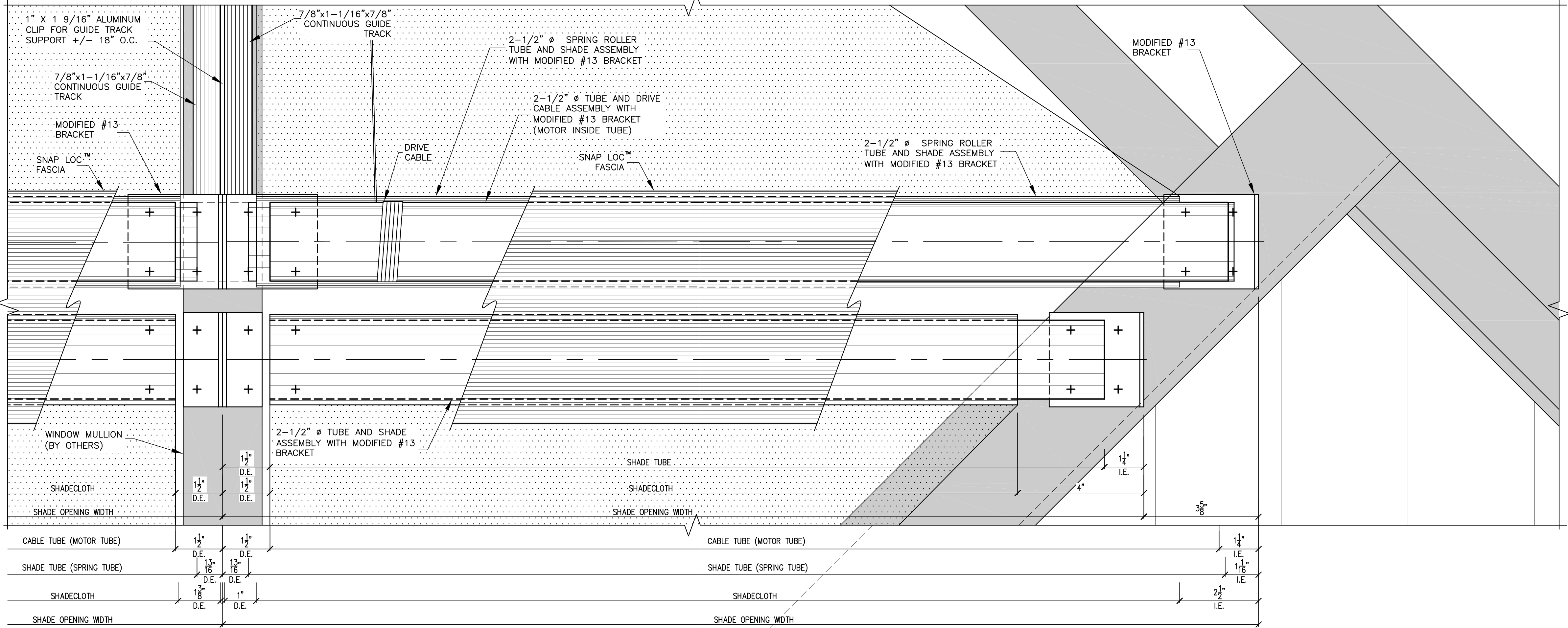
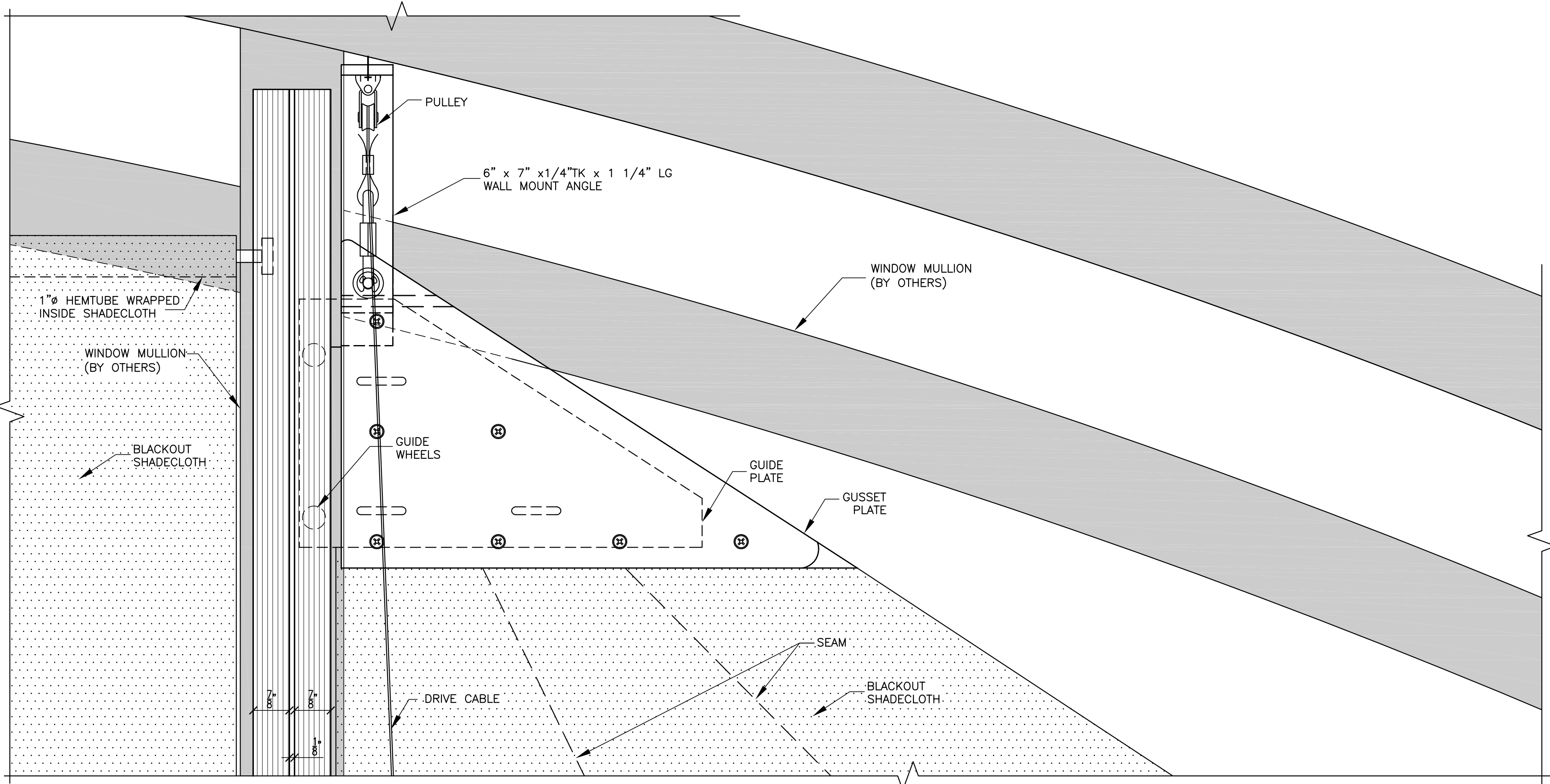


MechoShade Systems, Inc.
42-03 35th Street
Long Island City, NY 11101
Tel: 718-729-2020
Fax: 718-729-2941

Copyright © 2007 MechoShade Systems Inc.

JOB		YALE SCHOOL OF FORESTRY NEW HAVEN, CT	DWG NO.	M-2825EMB	REV.	△
			JOB NO.	384145		
TITLE		PROPOSED DETAILS "ELECTRO" SHADES	PROPOSAL NO.	148272-0-3		
			DATE	05/15/08	SCALE	AS NOTED
ARCHITECT		CENTERBROOK ARCHITECTS AND PLANNERS, LLC	DWN. BY	B.F.	CKD. BY	Z.D.
DEALER		DRAPERIES INC.	SHEET NO.	5	OF	8

PRINTS				
REV	SEP	FOR	TO	DATE
4	1	APPL	DLR	05/15



GG ELEVATION VIEW
SCALE: 1/2 FULL SIZE

NOTES:
SEE SHEET #1

SHOP DRAWING DIMENSIONS

DETAILS: HARDWARE SIZES $\pm 1/32"$ (0.79mm)
ROLL DIAMETER SIZES $\pm 1/8"$ (3.18mm)
EDGE CLEARANCE $\pm 3/16"$ (4.76mm)

SHADE BANDS: RollerShade width and height dimensions (W x HT) are approximate, subject to final field dimensions to be scheduled by the Dealer/Contractor and provided to MechoShade Systems for fabrication in accordance with Contract Documents. Shop drawings are for typical details and shade locations only. Final sizes are not included. All blocking and supports are shown for reference only. Blocking design is not included in this Shop Drawing. Blocking is Not In Contract.

FILE NAME: M:\M-2825EMB Yale School of Forestry\SHOP DRAWINGS\DETAILS.dwg

NO.	DATE	DESCRIPTION	BY
4			
3			
2			
1			
NO.	DATE	DESCRIPTION	BY
REVISIONS			



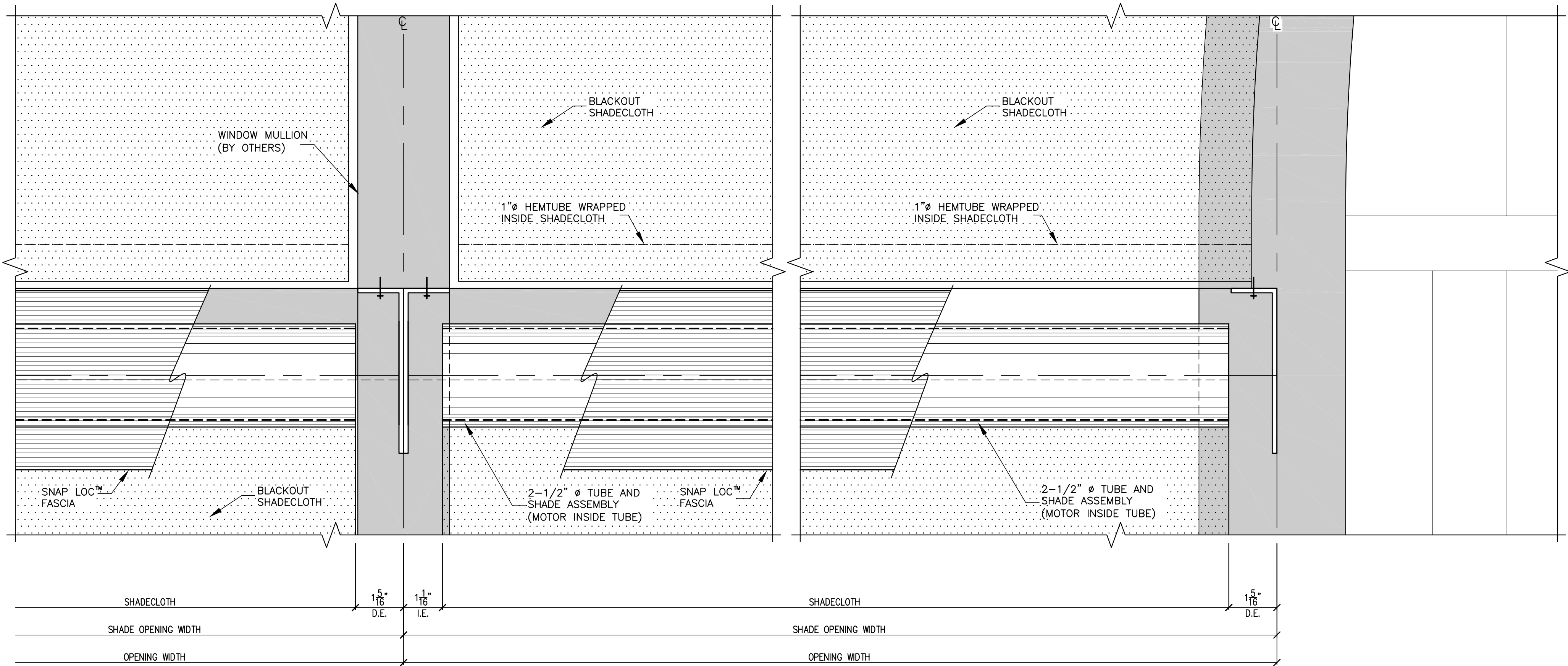
MechoShade Systems, Inc.
42-03 35th Street
Long Island City, NY 11101
Tel: 718-729-2020
Fax: 718-729-2941

Copyright © 2007 MechoShade Systems Inc.

JOB	YALE SCHOOL OF FORESTRY NEW HAVEN, CT
TITLE	PROPOSED DETAILS "ELECTRO" SHADES
DEALER	DRAPERIES INC.

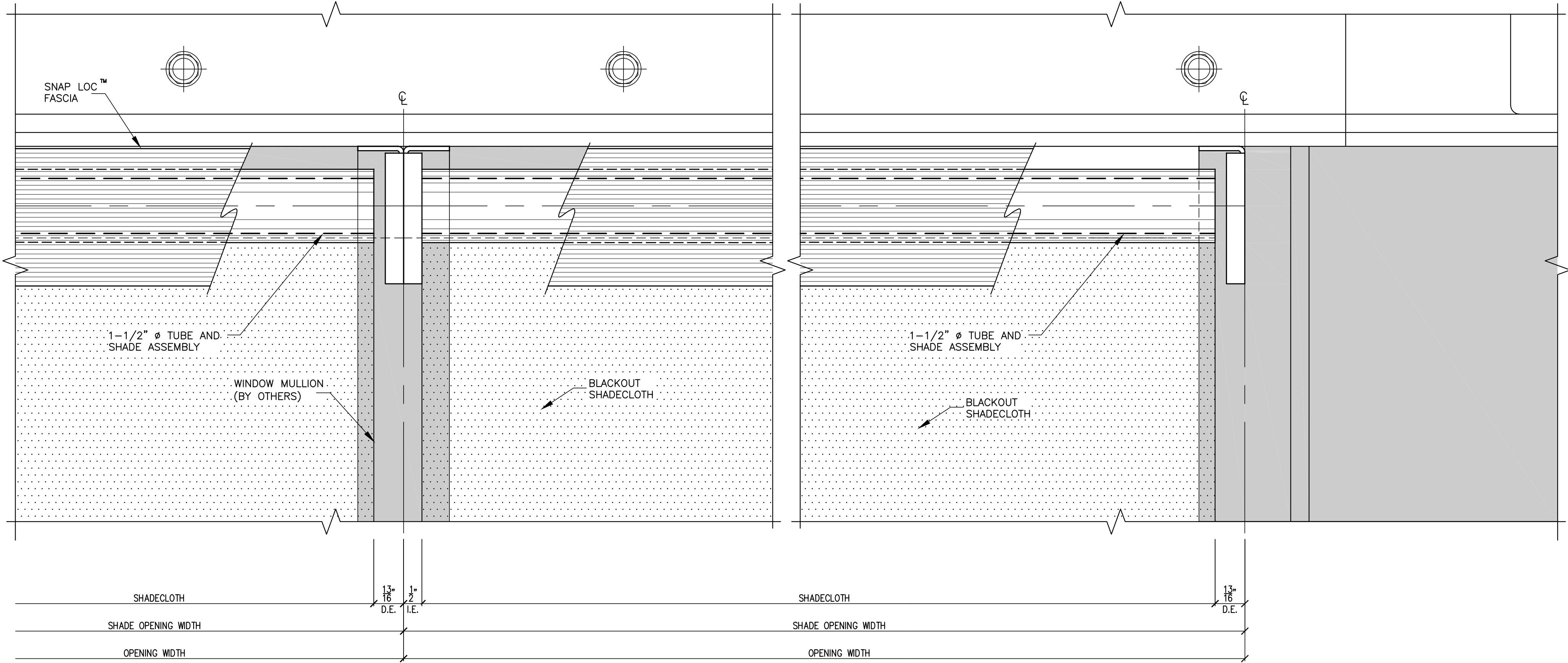
DWG NO.	M-2825EMB	REV.	△
JOB NO.	384145	PROPOSAL NO.	148272-0-3
DATE	05/15/08	SCALE	AS NOTED
DWN. BY	B.F.	CKD. BY	Z.D.
SHEET NO.	6	OF	8

PRINTS				
REV	SEP	FOR	TO	DATE
4	1	APPL	DLR	05/15



HH ELEVATION VIEW
SCALE: 1/2 FULL SIZE

JJ ELEVATION VIEW
SCALE: 1/2 FULL SIZE



KK ELEVATION VIEW
SCALE: 1/2 FULL SIZE

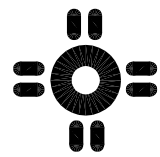
LL ELEVATION VIEW
SCALE: 1/2 FULL SIZE

NOTES:
SEE SHEET #1

SHOP DRAWING DIMENSIONS
DETAILS: HARDWARE SIZES $\pm 1/32"$ (0.79mm)
ROLL DIAMETER SIZES $\pm 1/8"$ (3.18mm)
EDGE CLEARANCE $\pm 3/16"$ (4.76mm)
SHADE BANDS: RollerShade width and height dimensions (W x HT) are approximate, subject to final field dimensions to be scheduled by the Dealer/Contractor and provided to MechoShade Systems for fabrication in accordance with Contract Documents. Shop drawings are for typical details and shade locations only. Final sizes are not included. All blocking and supports are shown for reference only. Blocking design is not included in this Shop Drawing. Blocking is Not in Contract.

FILE NAME: M:\M-2825EMB Yale School of Forestry\SHOP DRAWINGS\DETAILS.dwg

NO.	DATE	DESCRIPTION	BY
4			
3			
2			
1			

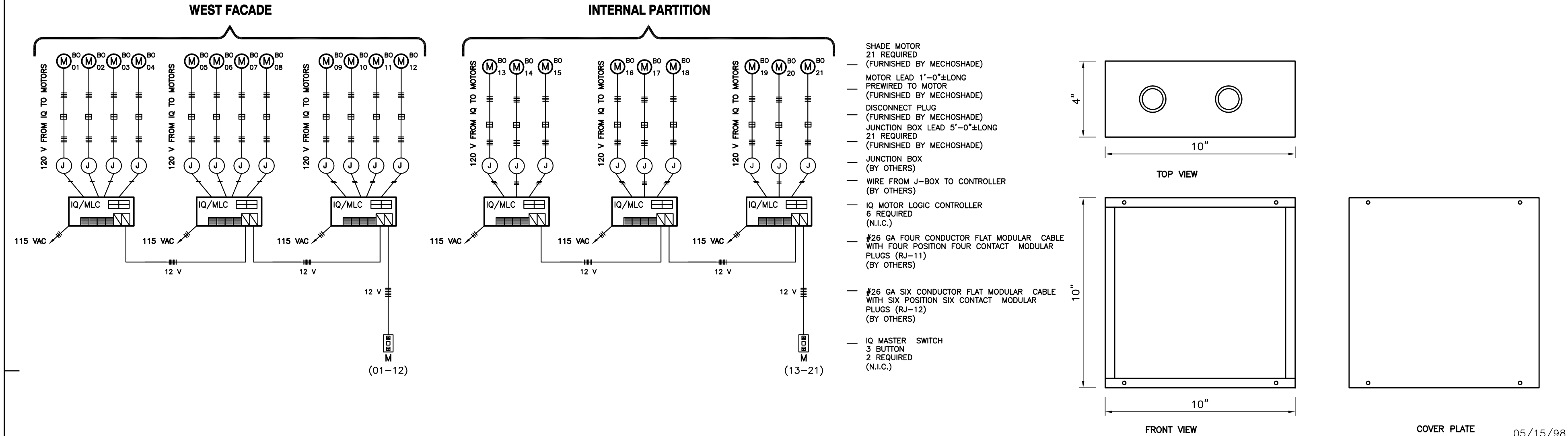


MechoShade Systems, Inc.
42-03 35th Street
Long Island City, NY 11101
Tel: 718-729-2020
Fax: 718-729-2941

Copyright © 2007 MechoShade Systems Inc.

JOB	YALE SCHOOL OF FORESTRY NEW HAVEN, CT	DWG NO.	M-2825EMB	REV.	△
JOB NO.	384145	PROPOSAL NO.	148272-0-3	SCALE	AS NOTED
DATE	05/15/08	DWN. BY	B.F.	CHK. BY	Z.D.
DEALER	DRAPERIES INC.	SHEET NO.	7	OF	8

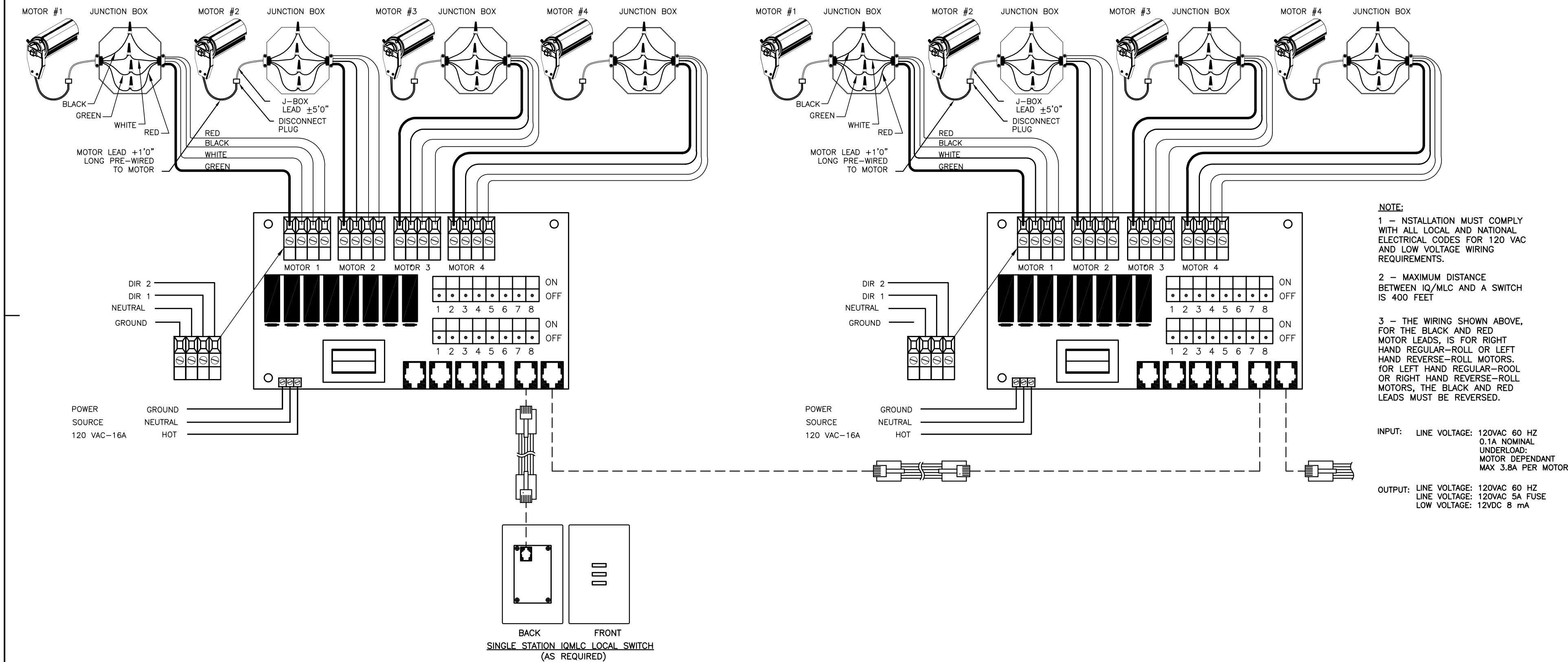
PRINTS				
REV	SEP	FOR	TO	DATE
4	1	APPL	DLR	05/15



WIRING SCHEMATICS

10"x10"x4" SCREW COVER BOX

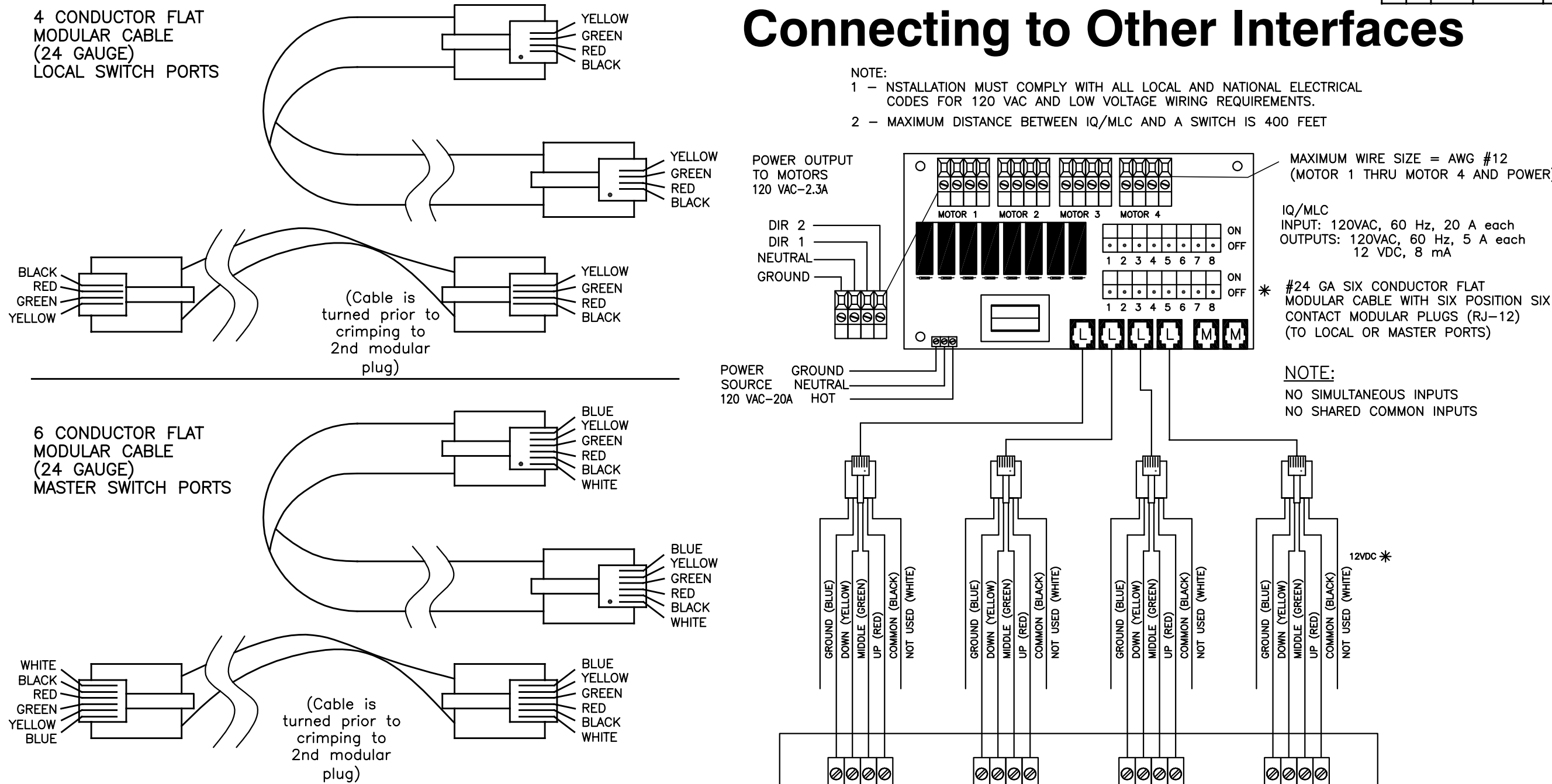
(USED FOR IQ/MLC)



STANDARD WIRING DIAGRAM 5 AND MORE MOTORS WITH MULTIPLE IQ/MLC AND ONE SWITCH

NOTES:
SEE SHEET #1

Crimping Instructions for IQ/MLC Four and Six Conductor Flat Modular Switching Cables



The IQ/MLC can be connected to any interface that uses a momentary dry contact closure (3 dry contact closures per switch for full function or 2 for partial).

Local Ports

Local Ports use a 4-conductor 24 gauge modular cable and RJ11 connector with the following pin positions:

Pin 1: Common (Black)
Pin 2: Top (Red)
Pin 3: Middle (Green)
Pin 4: Bottom (Yellow)

Master Ports & Local Ports

Master Ports use a 6-conductor 26 gauge flat modular cable and RJ12 connector with the following pin positions:

Pin 1: Not used (White)
Pin 2: Common (Black)
Pin 3: Top (Red)
Pin 4: Middle (Green)
Pin 5: Bottom (Yellow)
Pin 6: Ground (Blue)

Only momentary closures of a minimum one-half of a second will engage the relays to raise or lower the shades. Maintained closures will not activate relays for the period of time they are closed. To stop shades at any point along the window, a momentary closure is required between common and any direction or middle pin.

For example, if shades are to be brought to the 50% point from the local port, a momentary closure between pins 1 and 3 would be required. However from the master port, a momentary closure between pins 2 and 4 would be required.

Calibration Mode:

Calibration Mode can be activated from the master port by closing contacts between pins 2, 3 and 5 simultaneously for a minimum of 10 seconds. Calibration can also be accessed from a local port only for those motors associated to that local port (via dip switch settings) by closing contacts between pins 1, 2 and 4 simultaneously for a minimum of 10 seconds.

Uniform Mode:

To access or leave the Uniform Mode from the master port, close contacts between pins 2, 3, 4 and 5 simultaneously for a minimum of 10 seconds.

Pin assignments for default and custom intermediate stop positions for both Local Ports and Master Ports

Default intermediate stop positions

Position	Local Ports	Master Ports
Full Up	Pins 1 and 2	Pins 2 and 3
25% Down	Pins 1, 2 & 3	Pins 2, 3 & 4
50% Down	Pins 1 and 3	Pins 2 and 4
75% Down	Pins 1, 3 & 4	Pins 2, 4 & 5
Full Down	Pins 1 & 4	Pins 2 & 5

Custom intermediate stop positions

Position	Local Ports	Master Ports
Full Up	Pins 1 and 2	Pins 2 and 3
1st Position	Pins 1, 2 & 3	Pins 2, 3 & 4
2nd Position	Pins 1 & 3	Pins 2 and 4
3rd Position	Pins 1, 3 & 4	Pins 2, 4 & 5
Full Down	Pins 1 & 4	Pins 2 & 5

Custom Calibration (To activate: close contacts for 10 seconds minimum)

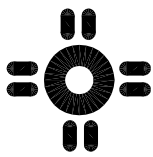
Local Ports	Master Ports
Close contacts between Pins 1, 3 and 4	Pins 2, 3 and 5

Uniform Mode (To toggle in/out: close contacts for 10 seconds minimum)

Local Ports	Master Ports
Close contacts between Pins 1, 2, 3 and 4	Pins 2, 3, 4 and 5

02/06/2008

4			
3			
2			
1			
NO.	DATE	DESCRIPTION	BY
REVISIONS			



MechoShade Systems, Inc.
42-03 35th Street
Long Island City, NY 11101
Tel: 718-729-2020
Fax: 718-729-2941

Copyright © 2001 MechoShade Systems Inc.

JOB YALE SCHOOL OF FORESTRY
NEW HAVEN, CT

TITLE PROPOSED DETAILS
"ELECTRO" SHADES

DATE 05/15/08
BY B.F. CKD. BY Z.D.

DEALER DRAPERIES INC.

DWG NO. M-2825EMB
JOB NO. 384145

PROPOSAL NO. 148272-0-3
SCALE AS NOTED

OWN. BY B.F. CKD. BY Z.D.

SHEET NO. 8 OF 8

FILE NAME: M:\M-2825EMB Yale School of Forestry\SHOP DRAWINGS\FINAL PAGE.dwg