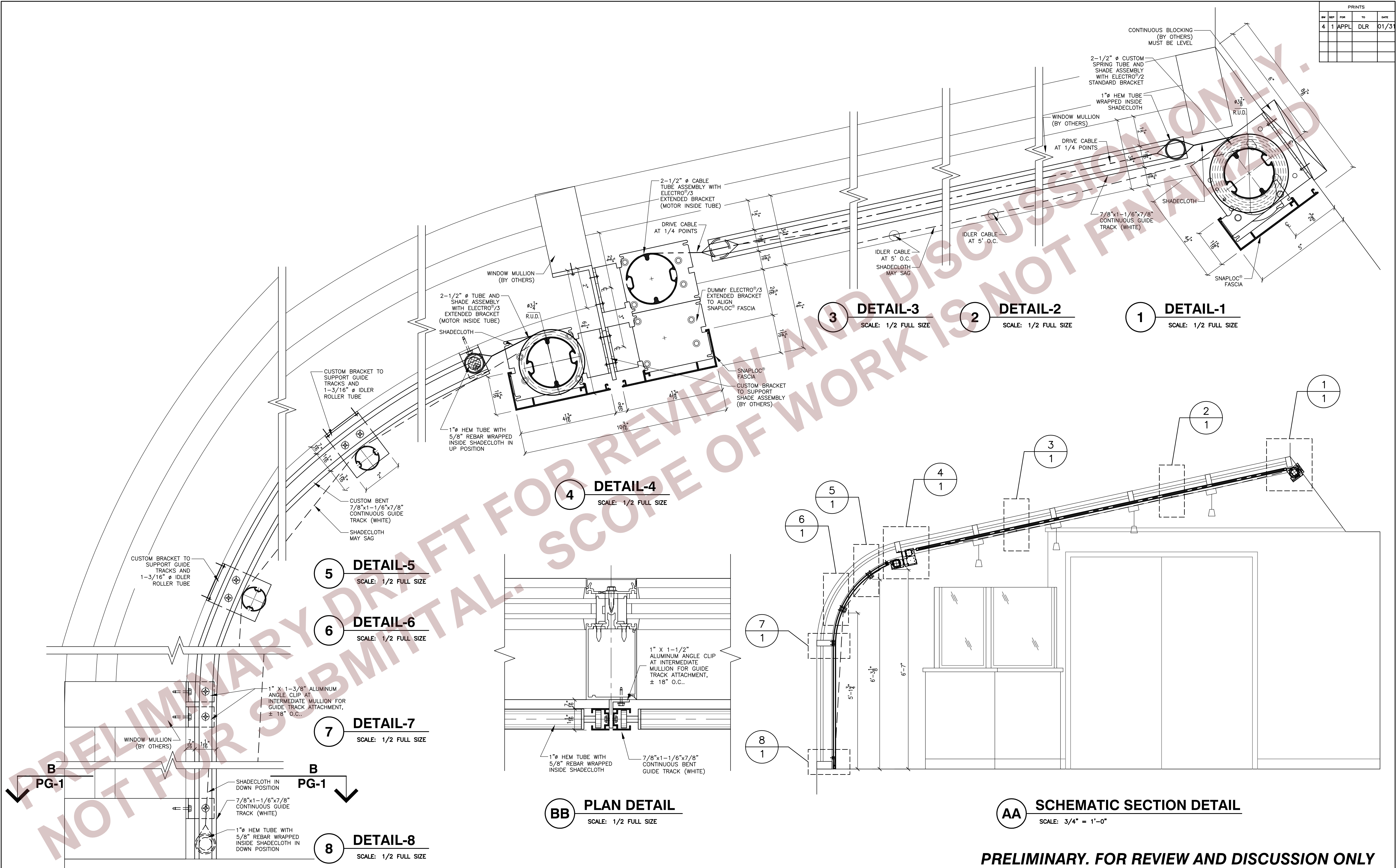


PRINTS				
REV	SEP	FOR	TO	DATE
4	1	APPL	DLR	01/31



NOTES:  
1 - ALL DIMENSIONS AND JOB CONDITIONS TO BE FIELD VERIFIED BY DEALER BEFORE FABRICATION.  
2 - ALL MATERIALS, COLORS, FINISHES, ETC. ARE TO BE MechoShade STANDARDS UNLESS OTHERWISE NOTED.  
3 - MechoShade Systems, Inc. RESERVES THE RIGHT TO MAKE DESIGN MODIFICATIONS AND TECHNICAL CHANGES WITHOUT PRIOR NOTICE.

**SHOP DRAWING DIMENSIONS**  
DETAILS: HARDWARE SIZES ± 1/32" (0.79mm)  
ROLL DIAMETER SIZES ± 1/8" (3.18mm)  
EDGE CLEARANCE ± 3/16" (4.76mm)  
SHADE BANDS: RollerShade width and height dimensions (W x HT) are approximate, subject to final field dimensions to be scheduled by the Dealer/Contractor and provided to MechoShade Systems for fabrication in accordance with Contract Documents. Shop drawings are for typical details and shade locations only. Final sizes are not included. All blocking and supports are shown for reference only. Blocking design is not included in this Shop Drawing. Blocking is Not In Contract.  
FILE NAME: X:\Engineered Solutions\001 Pre-Sale Folders\PS-1117-Yale New Haven Hospital Physical Therapy\04 MSS Deliverables\01 Drawings\PS-1117 Rev0-Details-110128.dwg

NO.	DATE	DESCRIPTION	BY
4			
3			
2			
1			

**MechoShade Systems, Inc.**  
The Architect's Choice™  
42-03 35th Street  
Long Island City NY 11101  
T: +1 (718) 729-2020  
F: +1 (718) 729-2941  
www.MechoShadeSystems.com  
Copyright © 2006 MechoShade Systems Inc.

JOB	YALE NEW HAVEN HOSPITAL PHYSICAL THERAPY	DWG NO.	PS-1117	REV.	△
JOB NO.		PROPOSAL NO.			
TITLE	PROPOSED DETAILS "MOTOR-SPRING & TOP-DOWN SHADES"	DATE	01/31/11	SCALE	AS NOTED
ARCHITECT		DWN. BY	C.T.	CHK. BY	L.K.
DEALER		SHEET NO.	1	OF	1