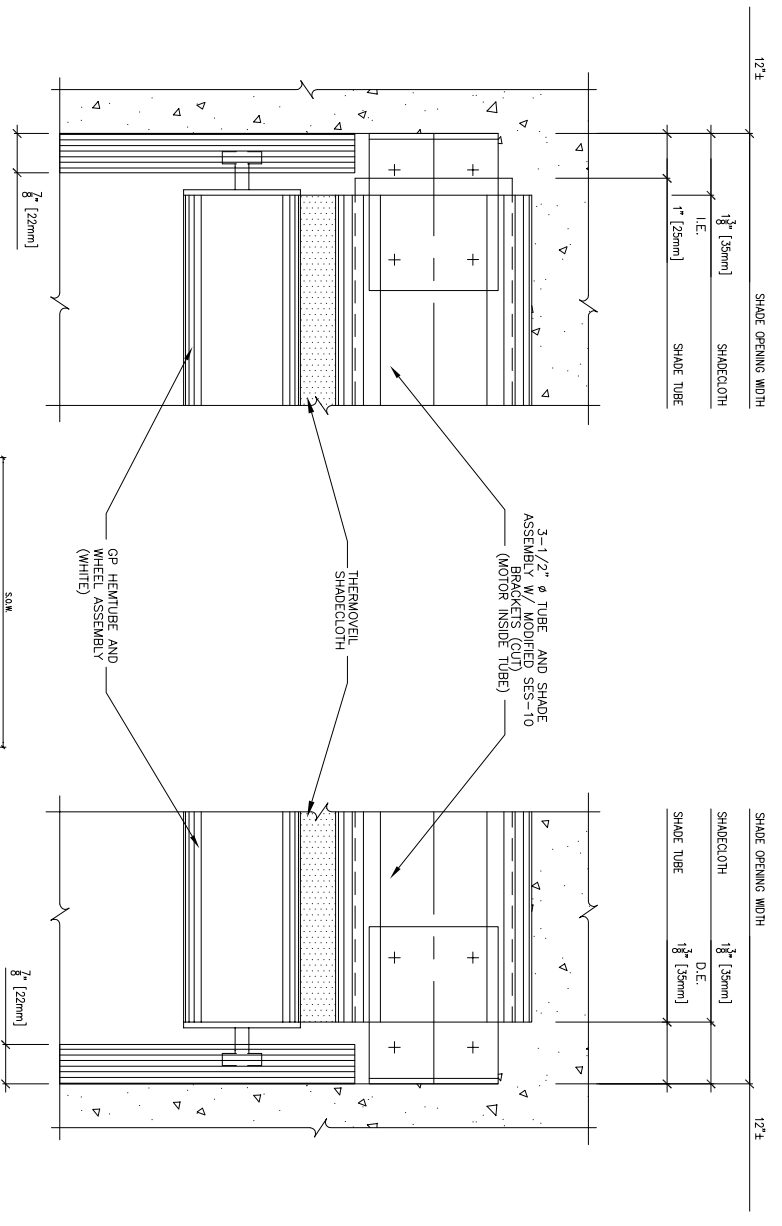
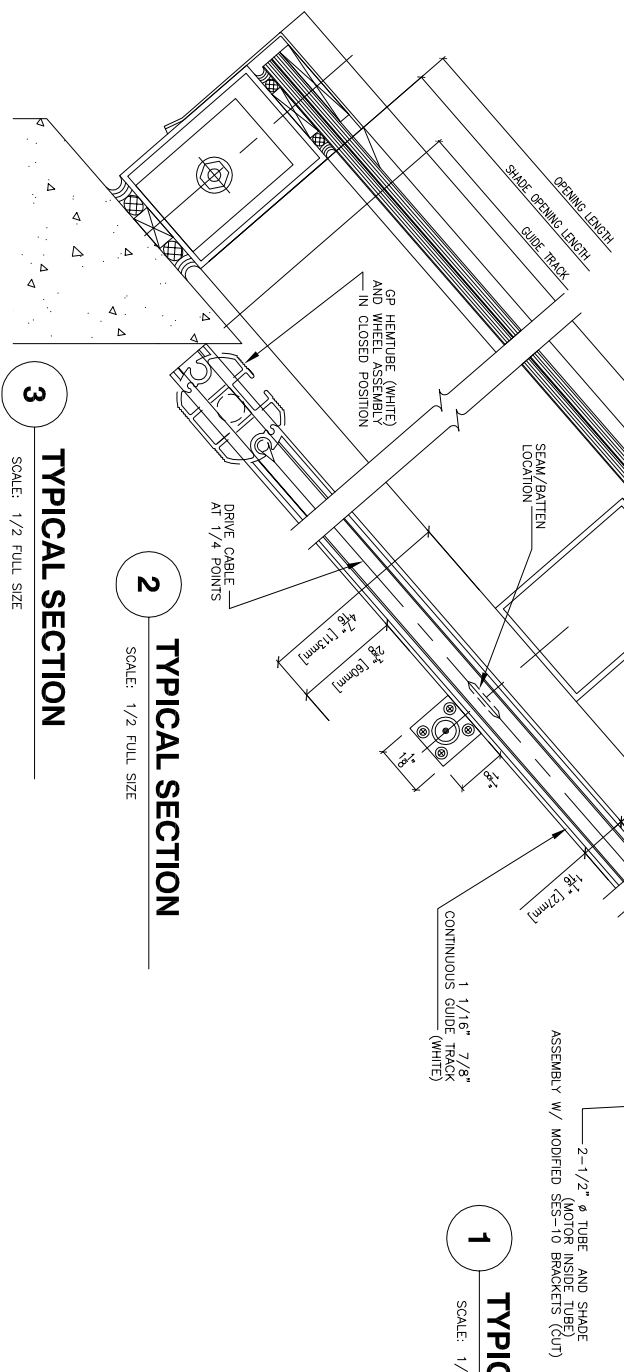


PRINTS		
NO.	REV.	DATE

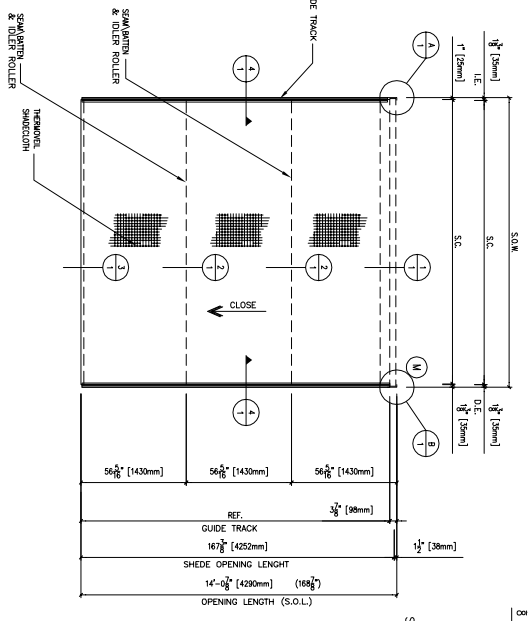


1 TYPICAL SECTION
SCALE: 1/2 FULL SIZE

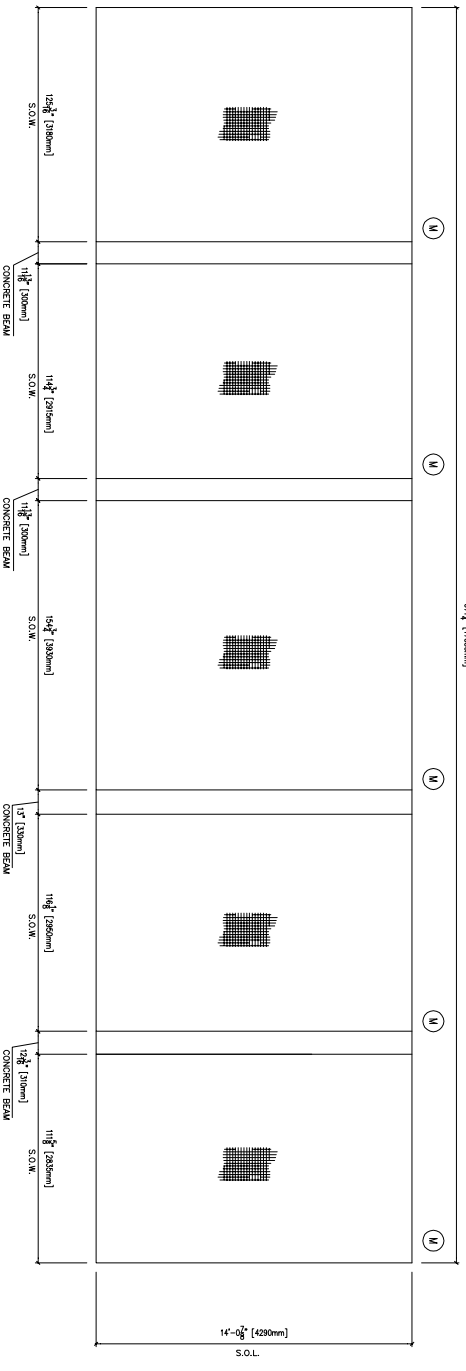


2 TYPICAL SECTION
SCALE: 1/2 FULL SIZE

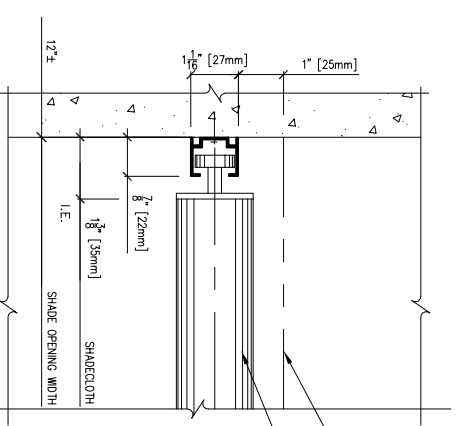
3 TYPICAL SECTION
SCALE: 1/2 FULL SIZE



SHADE PLAN
SCALE: 1/4"=1'-0"
5 REQUIRED (SIMILAR)

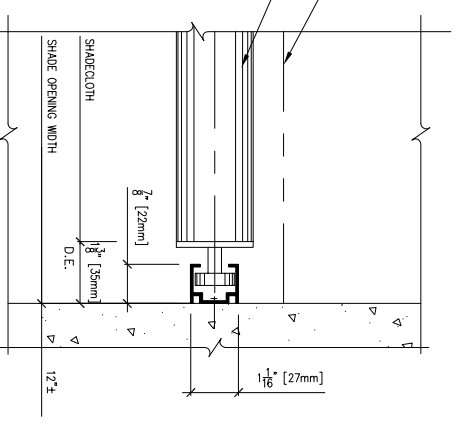


REFLECTED PLAN
SCALE: 1/4"=1'-0"



A

SCALE: 1/2 FULL SIZE



B

SCALE: 1/2 FULL SIZE

KEY

C.S.	CENTER SUPPORT
D.E.	DOWN END
I.E.	UP END
O.H.	OPENING HEIGHT
O.O.W.	OVERALL OPENING WIDTH
O.W.	OPENING WIDTH
R.L.D.	ROLL UP DIAMETER
S.C.	SHADE CLOTH
S.O.H.	SHADE OPENING HEIGHT
S.O.W.	SHADE OPENING WIDTH
V.F.	VERIFY IN FIELD

4 TYPICAL SECTION
SCALE: 1/2 FULL SIZE

NOTES:
1 - ALL DIMENSIONS AND JOB CONDITIONS TO BE FIELD VERIFIED BY DEALER BEFORE FABRICATION.
2 - ALL MATERIALS, COLORS, FINISHES, ETC. ARE TO BE MACHOSHADE STANDARDS UNLESS OTHERWISE NOTED.
3 - MACHOSHADE SYSTEMS, INC. RESERVES THE RIGHT TO MAKE DESIGN MODIFICATIONS AND TECHNICAL CHANGES WITHOUT PRIOR NOTICE.
4 - MACHOSHADE SYSTEMS, INC. RESERVES THE RIGHT TO MAKE DESIGN MODIFICATIONS AND TECHNICAL CHANGES WITHOUT PRIOR NOTICE.
5 - MACHOSHADE SYSTEMS, INC. RESERVES THE RIGHT TO MAKE DESIGN MODIFICATIONS AND TECHNICAL CHANGES WITHOUT PRIOR NOTICE.
6 - MACHOSHADE SYSTEMS, INC. RESERVES THE RIGHT TO MAKE DESIGN MODIFICATIONS AND TECHNICAL CHANGES WITHOUT PRIOR NOTICE.

SHOP DRAWING DIMENSIONS
HARDWARE SIZES ± 1/32" (0.79mm)
DETAILS: ± 0.01" (0.25mm)
EDGE CLEARANCE ± 0.16" (4.176mm)
SHADE BANDS: RollerShade width and height dimensions (W x H) are approximate, subject to final field dimensions to be scheduled.
ShadeShade width and height dimensions (W x H) are approximate, subject to final field dimensions to be scheduled.
Shop drawings are for typical details and shade locations only. Final sizes are not included.

NO.	DATE	DESCRIPTION	BY	REVISIONS
1				
2				
3				
4				

Machoshade Systems, Inc.
42-03 35th Street,
Long Island City, NY 11101
Tel: 718-729-2020
Fax: 718-729-2941

JOB NO.	TITLE	DATE	SCALE	JOB NO.	REV.

DATE	BY	CHECKED	DATE	BY

Copyright © 1998 Machoshade Systems Inc.