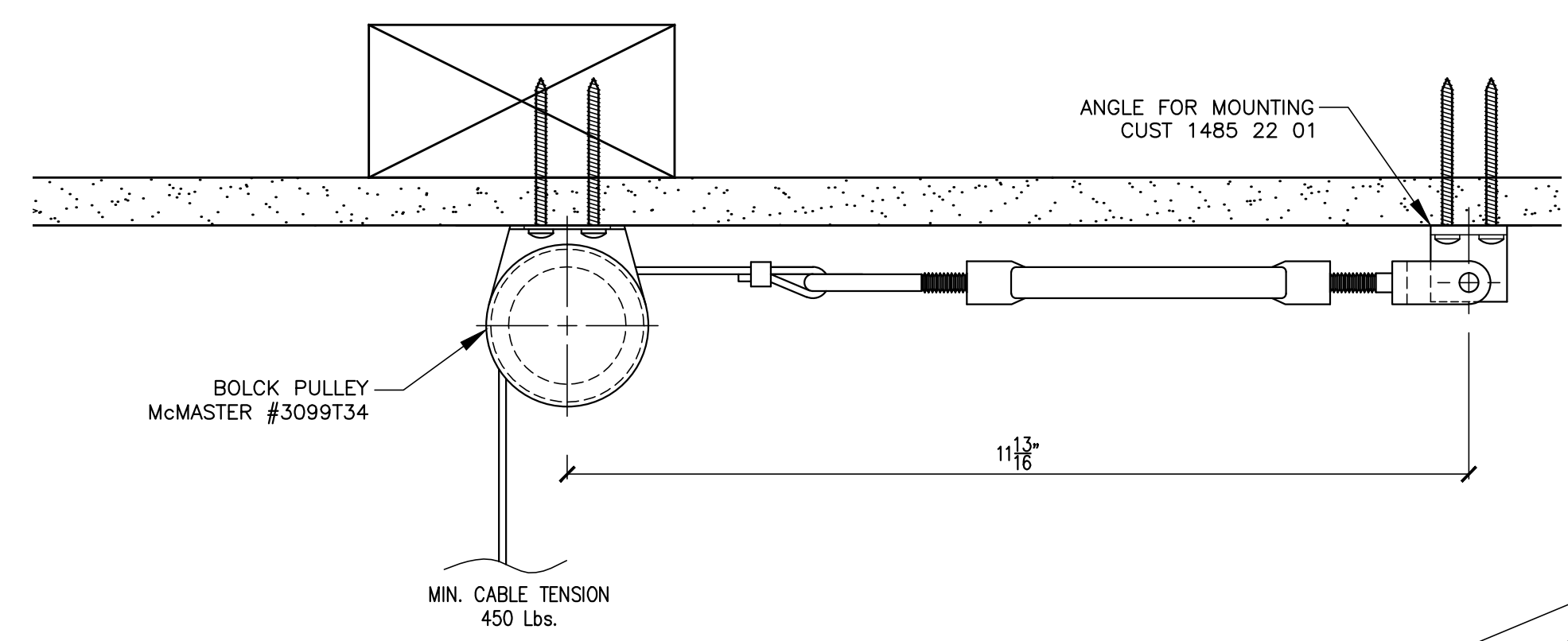
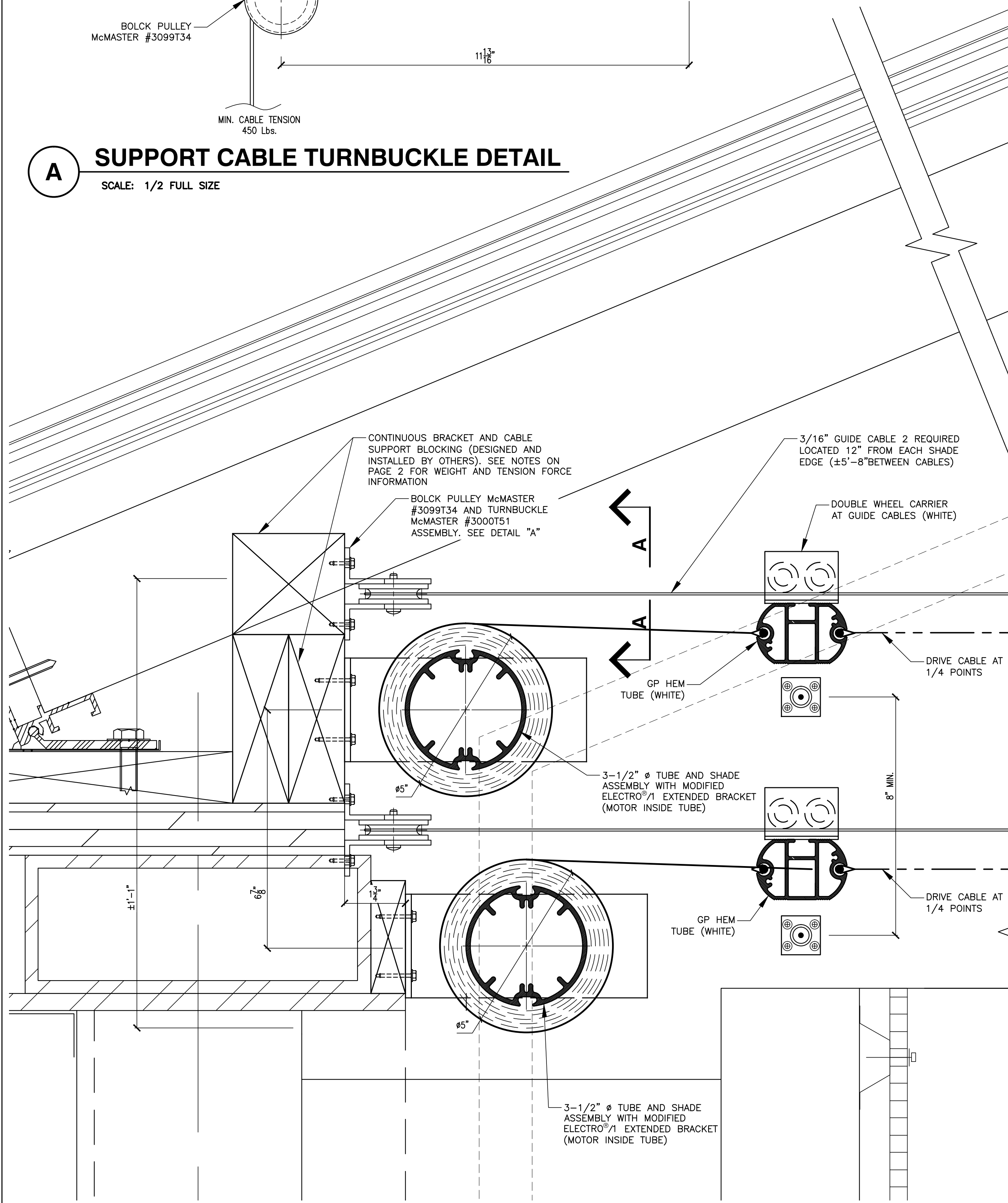


PRINTS				
REV	REP	FOR	TO	DATE
4	1	APPL	DLR	09/22

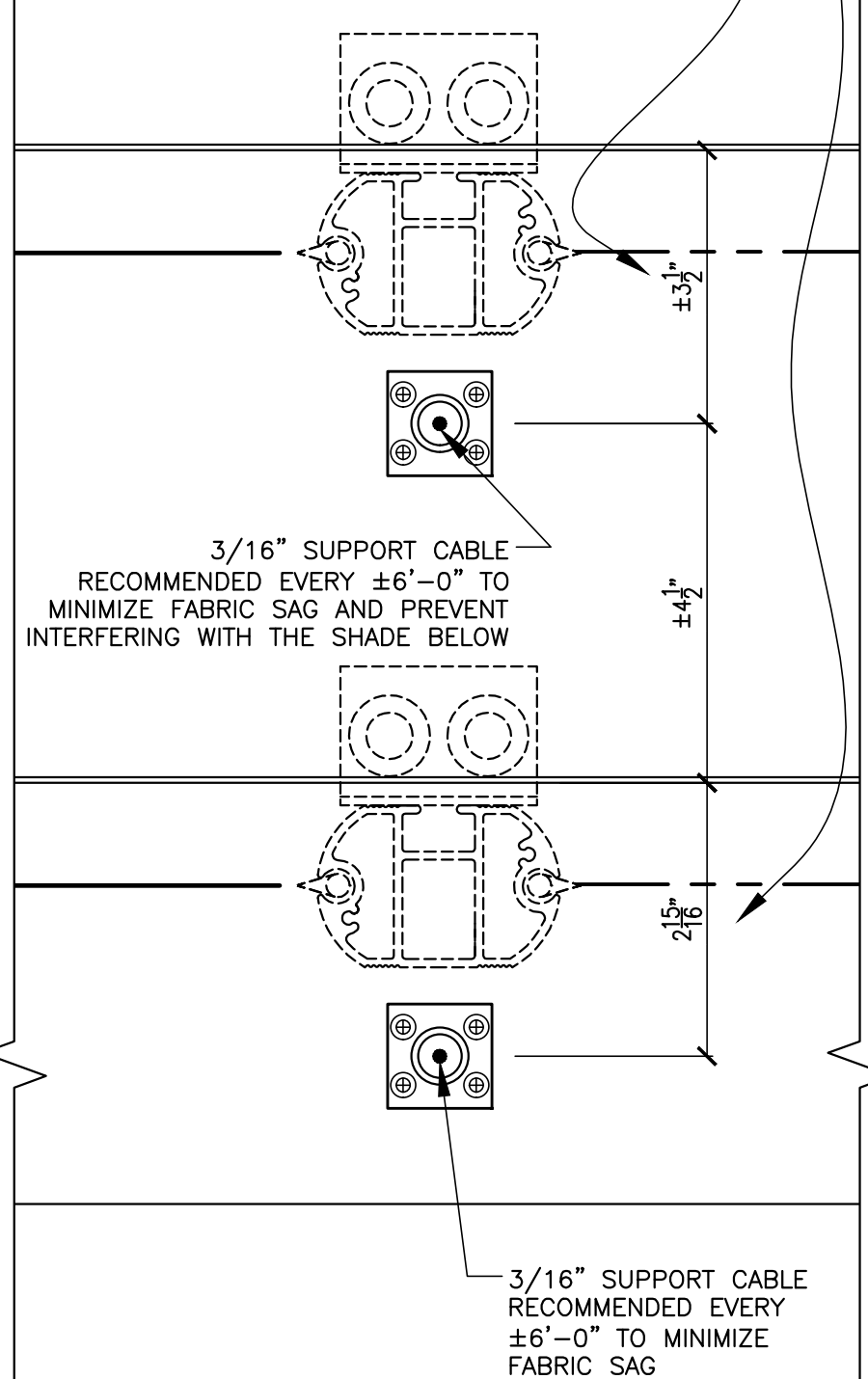


A SUPPORT CABLE TURNBUCKLE DETAIL
SCALE: 1/2 FULL SIZE

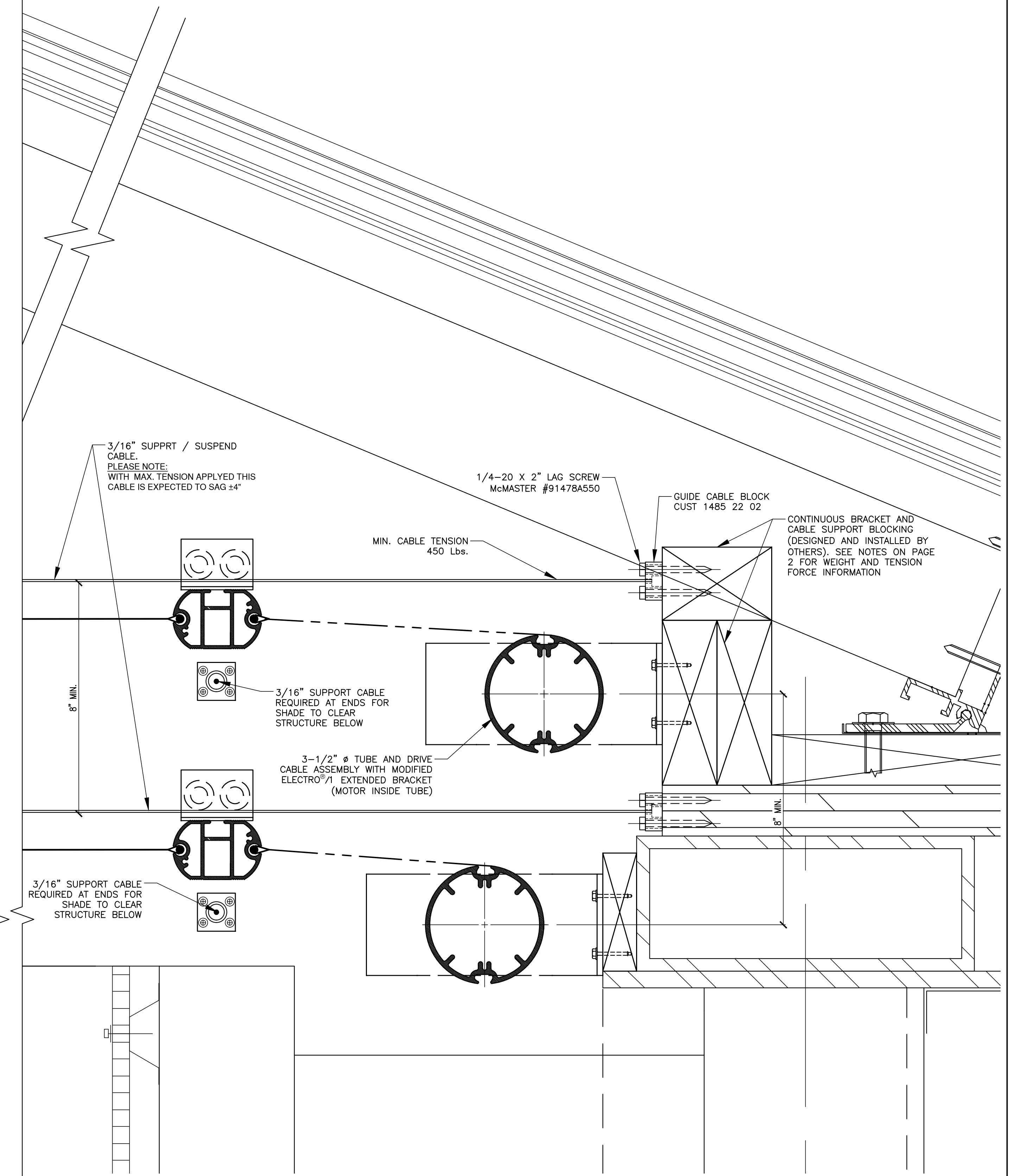


1 SECTION AT FABRIC TAKE-UP TUBE
SCALE: 1/2 FULL SIZE

PLACEMENT OF GUIDE CABLE/IDLER ROLLER MUST BE FIELD VERIFIED BASED ON ACTUAL SAGGING OF SUSPENDED SYSTEM TO PREVENT HEM BAR GETTING CAUGHT ON CABLE IN MID-TRAVEL



**PRELIMINARY
FOR REVIEW AND DISCUSSION ONLY**



2 SECTION AT DRIVE CABLE TAKE-UP TUBE
SCALE: 1/2 FULL SIZE

NOTES:
1 - ALL DIMENSIONS AND JOB CONDITIONS TO BE FIELD VERIFIED BY DEALER BEFORE FABRICATION.
2 - ALL MATERIALS, COLORS, FINISHES, ETC. ARE TO BE MechoShade STANDARDS UNLESS OTHERWISE NOTED.
3 - MechoSystems RESERVES THE RIGHT TO MAKE DESIGN MODIFICATIONS AND TECHNICAL CHANGES WITHOUT PRIOR NOTICE.

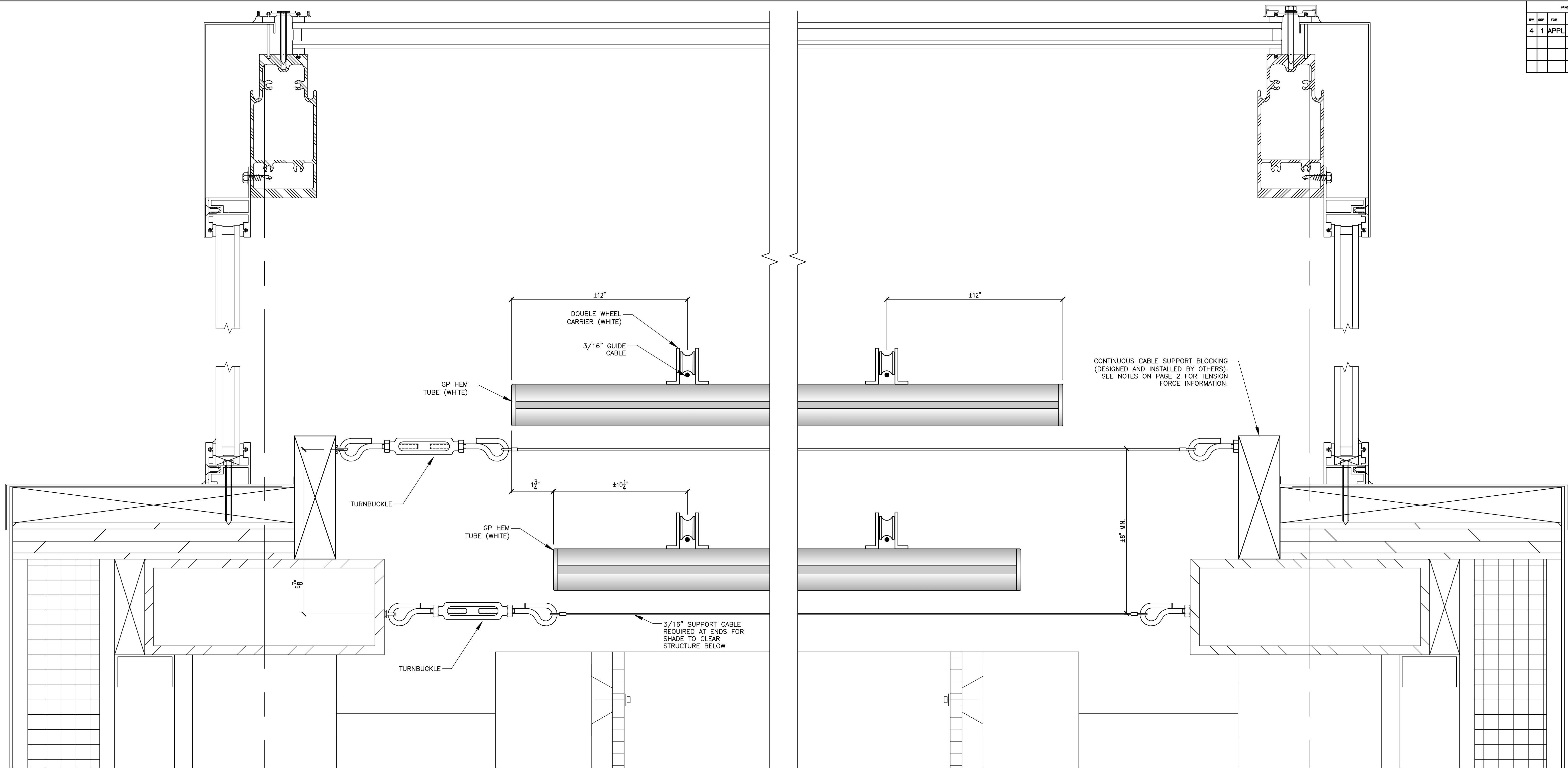
SHOP DRAWING DIMENSIONS
DETAILS: HARDWARE SIZES ± 1/32" (0.79mm)
ROLL DIAMETER SIZES ± 1/8" (3.18mm)
EDGE CLEARANCE ± 3/16" (4.76mm)
SHADE BANDS: RollerShade width and height dimensions (W x HT) are approximate, subject to final field dimensions to be scheduled by the Dealer/Contractor and provided to MechoShade Systems for fabrication in accordance with Contract Documents. Shop drawings are for typical details and shade locations only. Final sizes are not included. All blocking and supports are shown for reference only. Blocking design is not included in this Shop Drawing. Blocking is Not In Contract.

4			
3			
2			
1			
NO.	DATE	DESCRIPTION	BY
REVISIONS			

MechoSystems
Design with light™
42-03 35th Street
Long Island City, NY 11101
T: +1 (718) 729-2020
F: +1 (718) 729-2941
W: mechosystems.com

JOB	THURGOOD MARSHALL MIDDLE SCHOOL LYNN, MA	DWG NO.	PS-20328765	REV.	△
TITLE	PROPOSED DETAILS FLAT HORIZONTAL "FTS" SKYLIGHTER	PROPOSAL NO.		DATE	09/22/14
ARCHITECT	RDA	SCALE	AS NOTED	DWN. BY	Z.D.
DEALER		CKD. BY	Z.D.	SHEET NO.	1 OF 2

PRINTS				
REV	REV	FOR	TO	DATE
4	1	APPL	DLR	09/22



3 SECTION AT SUPPORT CABLE
SCALE: 1/2 FULL SIZE

4 SECTION AT SUPPORT CABLE
SCALE: 1/2 FULL SIZE

- NOTE:**
- ARCHITECT PLEASE VERIFY THAT THERE IS SUFFICIENT VENTING OF THE SPACE BETWEEN SHADE AND GLASS, AS EXCESSIVE HEAT BUILDUP WILL AFFECT SHADE OPERATION. TEMPERATURE MUST NOT EXCEED 40° C/104° F.
 - SKYLIGHT SHADE SYSTEM WILL BE SUBJECT UP TO 400 lbs OF PULLING FORCE AT EACH SHADE BRACKET. SUPPORT / SUSPEND CABLES WILL BE SUBJECT TO UP TO 1000 lbs OF PULLING FORCE AT EACH ATTACHEMENT POINT. GUIDE CABLES / IDLER ROLLERS WILL BE SUBJECT UP TO 300 lbs OF PULLING FORCE AT EACH ATTACHEMENT POINT. BLOCKING NEEDS TO BE DESIGNED TO WITHSTAND THOSE FORCES. BLOCKING AND SUPPORT DESIGN IS NOT INCLUDED. ALL BLOCKING SHOWN ON THIS DRAWING IS FOR REFERENCE ONLY. BLOCKING IS NOT IN CONTRACT.
 - BLOCKING MUST BE SQUARE AND PARALLEL TO THE BLOCKING OPPOSITE. THE DIAGONALS SHALL BE MEASURED WITHIN 1/2" TO ASSURE BLOCKING IS PARALLEL AND SQUARED.
 - ALL MOTORS MUST BE ACCESSIBLE FOR INSTALLATION AND MAINTENANCE.
 - SYSTEM WEIGHT IS 120 LBS PER SHADE UNIT.

NOTES:
1 - ALL DIMENSIONS AND JOB CONDITIONS TO BE FIELD VERIFIED BY DEALER BEFORE FABRICATION.
2 - ALL MATERIALS, COLORS, FINISHES, ETC. ARE TO BE MechoShade STANDARDS UNLESS OTHERWISE NOTED.
3 - MechoSystems RESERVES THE RIGHT TO MAKE DESIGN MODIFICATIONS AND TECHNICAL CHANGES WITHOUT PRIOR NOTICE.

SHOP DRAWING DIMENSIONS

DETAILS: HARDWARE SIZES ± 1/32" (0.79mm)
ROLL DIAMETER SIZES ± 1/8" (3.18mm)
SHADE BANDS: EDGE CLEARANCE ± 3/16" (4.76mm)

RollerShade width and height dimensions (W x HT) are approximate, subject to final field dimensions to be scheduled by the Dealer/Contractor and provided to MechoShade Systems for fabrication in accordance with Contract Documents. Shop drawings are for typical details and shade locations only. Final sizes are not included. All blocking and supports are shown for reference only. Blocking design is not included in this Shop Drawing. Blocking is Not In Contract.

4			
3			
2			
1			
NO.	DATE	DESCRIPTION	BY
REVISIONS			

MechoSystems
Design with light™
42-03 35th Street
Long Island City, NY 11101
T: +1 (718) 729-2020
F: +1 (718) 729-2941
W: mechosystems.com

JOB	THURGOOD MARSHALL MIDDLE SCHOOL LYNN, MA	DWG NO.	PS-20328765	REV.	△
TITLE	PROPOSED DETAILS DOUBLESHADE FLAT HORIZONTAL "FTS" SKYLIGHTER	PROPOSAL NO.		DATE	09/22/14
ARCHITECT	RDA	SCALE	AS NOTED	DWN. BY	Z.D.
DEALER		CKD. BY	Z.D.	SHEET NO.	2 OF 2