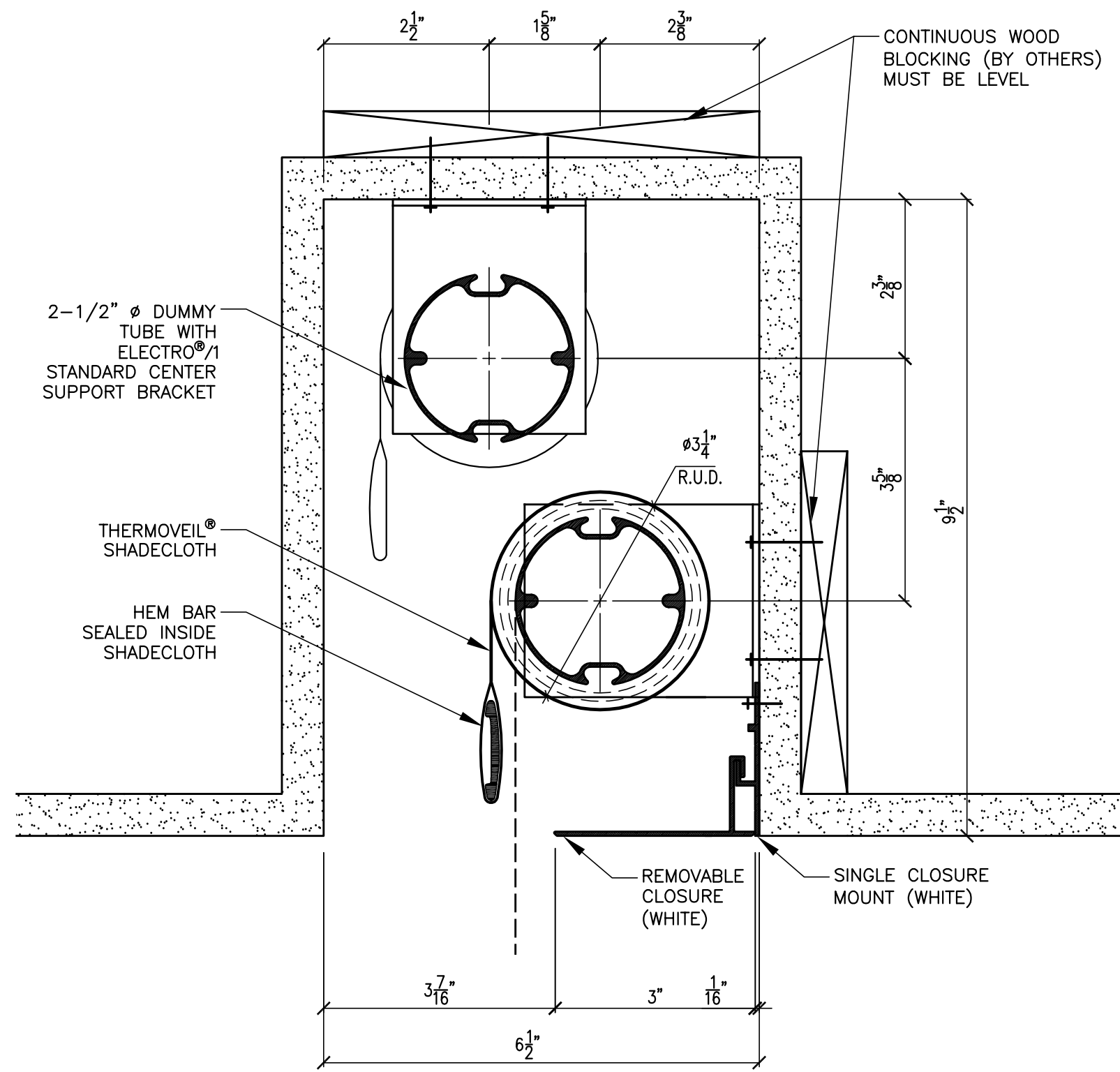
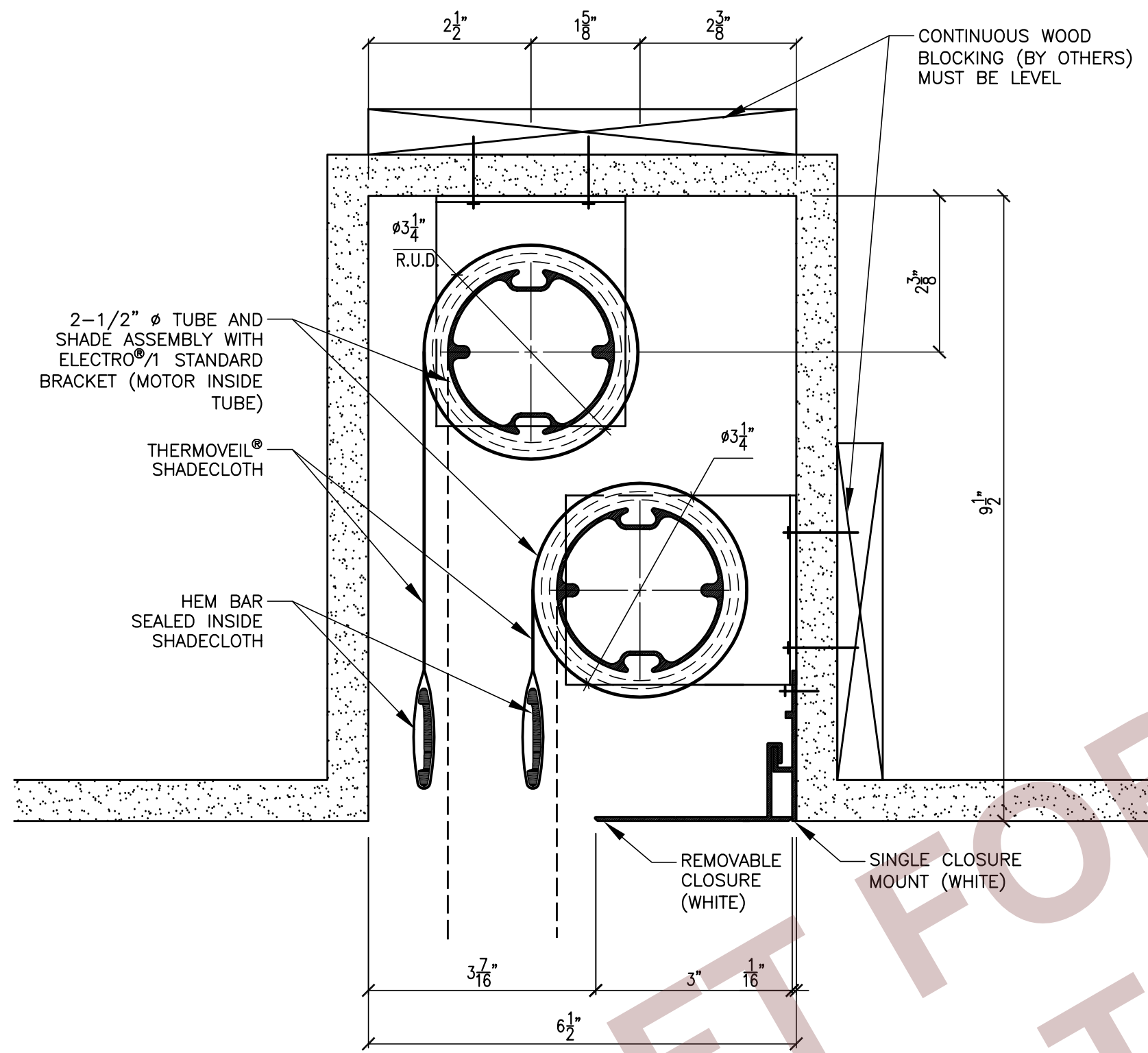


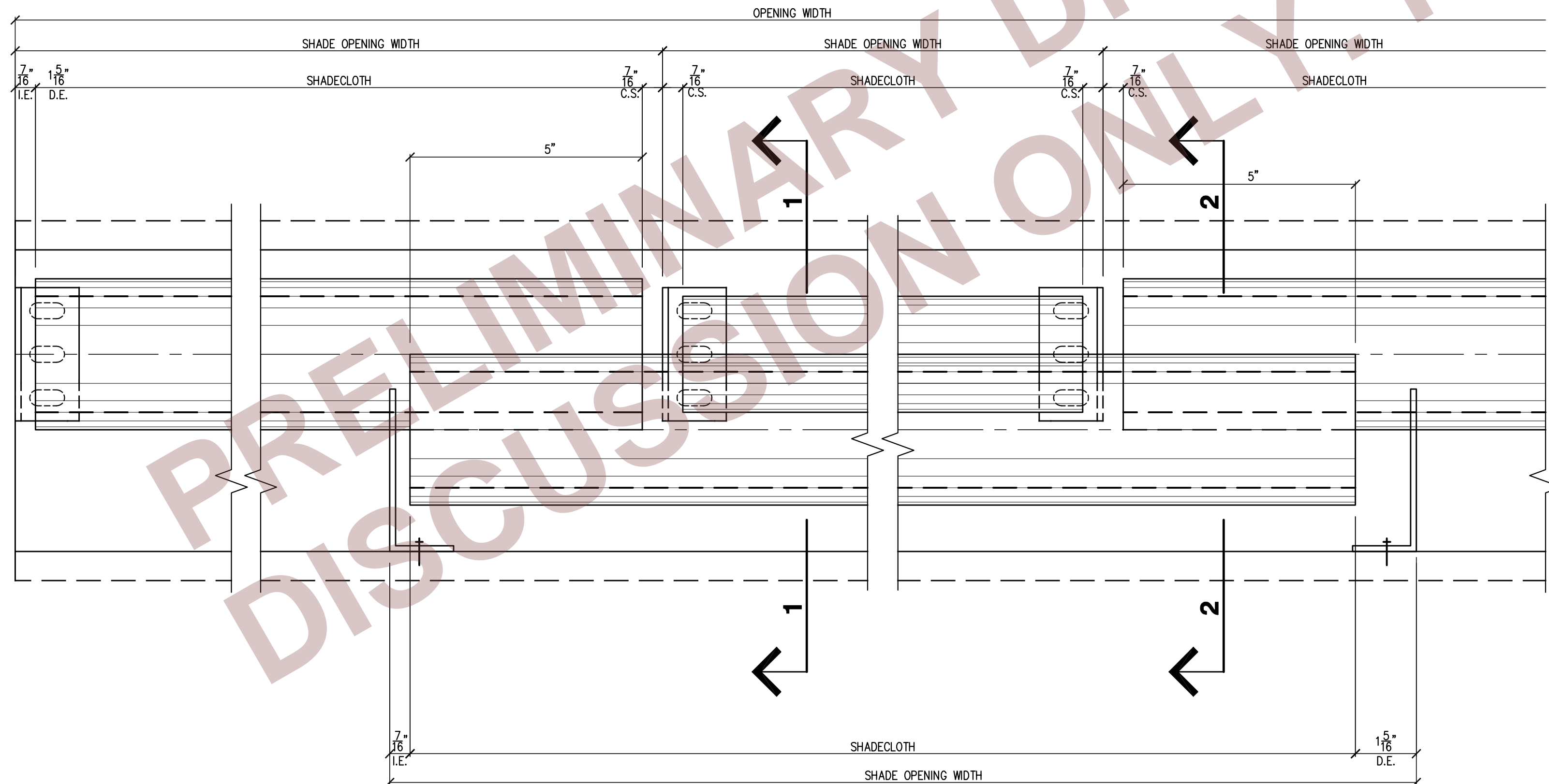
PRINTS				
DWG	CDP	FOR	TO	DATE
4	1	APPL	DLR	01/25



1 SECTION AT SHADE POCKET
SCALE: 1/2 FULL SIZE



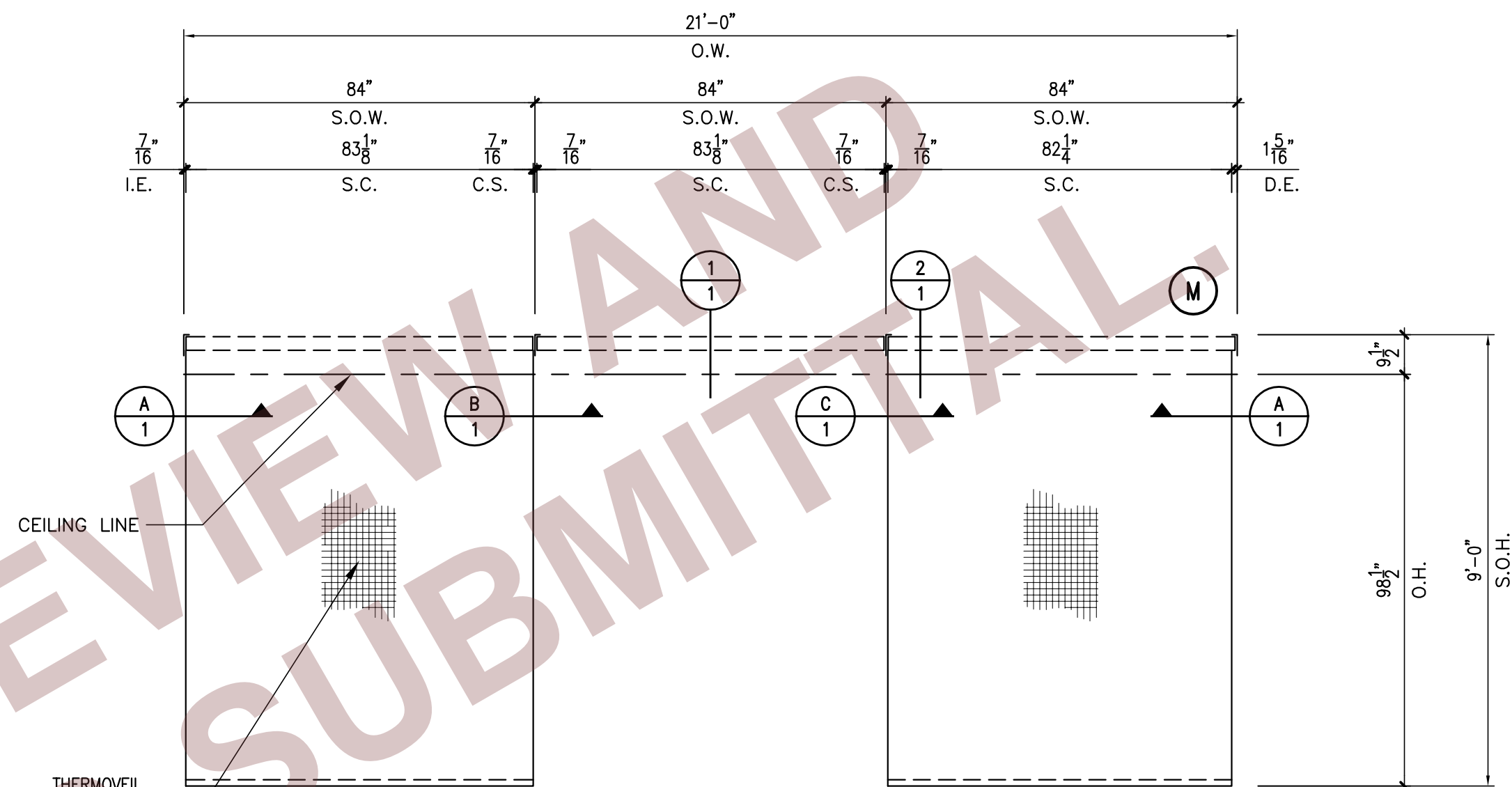
2 SECTION AT SHADE POCKET
SCALE: 1/2 FULL SIZE



A REFLECTED
SCALE: 1/2 FULL SIZE

B REFLECTED
SCALE: 1/2 FULL SIZE

C REFLECTED
SCALE: 1/2 FULL SIZE



AA INTERIOR ELEVATION
SCALE: 1/4"=1'-0"

KEY	
C.S.	- CENTER SUPPORT
D.E.	- DRIVE END
I.E.	- IDLE END
O.H.	- OPENING HEIGHT
O.O.W.	- OVERALL OPENING WIDTH
O.W.	- OPENING WIDTH
R.U.D.	- ROLL UP DIAMETER
S.C.	- SHADE CLOTH
S.O.H.	- SHADE OPENING HEIGHT
S.O.W.	- SHADE OPENING WIDTH
V.I.F.	- VERIFY IN FIELD
N.I.C.	- NOT IN CONTRACT

**PRELIMINARY
FOR REVIEW AND DISCUSSION ONLY**

NOTES:
1 - ALL DIMENSIONS AND JOB CONDITIONS TO BE FIELD VERIFIED BY DEALER BEFORE FABRICATION.
2 - ALL MATERIALS, COLORS, FINISHES, ETC. ARE TO BE MechoShade STANDARDS UNLESS OTHERWISE NOTED.
3 - MechoSystems RESERVES THE RIGHT TO MAKE DESIGN MODIFICATIONS AND TECHNICAL CHANGES WITHOUT PRIOR NOTICE.

SHOP DRAWING DIMENSIONS
DETAILS: HARDWARE SIZES ± 1/32" (0.79mm)
ROLL DIAMETER SIZES ± 1/8" (3.18mm)
EDGE CLEARANCE ± 3/16" (4.76mm)
SHADE BANDS: RollerShade width and height dimensions (W x HT) are approximate, subject to final field dimensions to be scheduled by the Dealer/Contractor and provided to MechoShade Systems for fabrication in accordance with Contract Documents. Shop drawings are for typical details and shade locations only. Final sizes are not included. All blocking and supports are shown for reference only. Blocking design is not included in this Shop Drawing. Blocking is Not In Contract.

NO.	DATE	DESCRIPTION	BY
4			
3			
2			
1			

MechoSystems
Design with light™
42-03 35th Street
Long Island City, NY 11101
T: +1 (718) 729-2020
F: +1 (718) 729-2941
W: mechosystems.com

JOB	STAPLES CAFETERIA FRAMINGHAM, MA	DWG NO.	PS-1468E	REV.	△
TITLE	PROPOSED DETAILS "ELECTRO" SHADES	JOB NO.			
ARCHITECT	GENSLER	PROPOSAL NO.			
DEALER		DATE	01/25/12	SCALE	AS NOTED
		DWN. BY	Z.D.	CKD. BY	Z.D.
		SHEET NO.	1	OF	1

© 2011 MechoShade Systems, Inc. All rights reserved. All trademarks herein are owned by MechoShade Systems, Inc. No part of this document may be reproduced or other wise used without the express written consent of MechoShade Systems, Inc.