

1'-1 7/8"

3 11/16"

6 9/16"

3 11/16"

8 1/2"

CONTINUOUS BLOCKING
(BY OTHERS)
MUST BE LEVEL

POCKET INSTALLER NOTE
 1 - POCKET MUST BE INSTALLED LEVEL AND PARALLEL TO WINDOW WALL.
 2 - POCKET FASTENERS MUST NOT INTERFERE WITH BRACKET LOCATIONS.

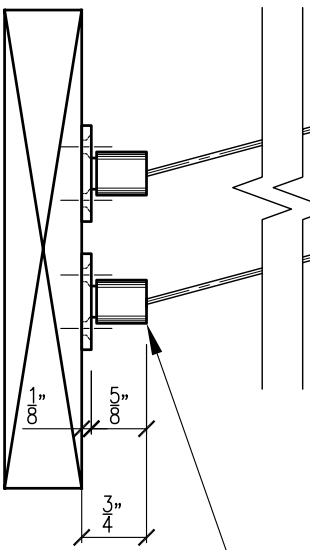
3-1/2" Ø TUBE AND SHADE ASSEMBLY (MOTOR INSIDE TUBE)

BLACKOUT SHADECLOTH

EXPOSED HEMBAR

#16 GA PAINTLOC STEEL # 7113 POCKET

TENSION KIT ASSEMBLY



4 3/4"

1 1/2"

1 1/2"